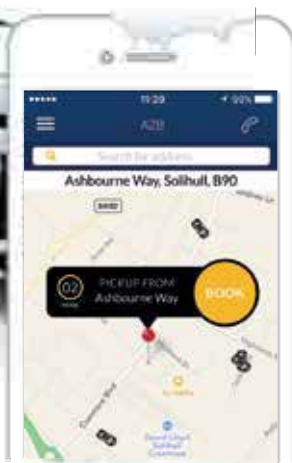


A2B
RADIO CARS
SOLIHULL & BIRMINGHAM'S
LARGEST TAXI COMPANY
WISHING OUR CUSTOMERS A VERY
MERRY CHRISTMAS & A PROSPEROUS NEW YEAR!



DOWNLOAD OUR FREE MOBILE APP
& PAY YOUR FARE BY CASH OR CARD



OR JUST CALL US ON:

0121 733 3000



Preparing & Sharing Local Food

Join us in our fantastic first floor restaurant with stunning views over rolling countryside.

Serving Breakfast and Lunch daily as well as Dinner Thursday to Saturday and our traditional Roasts on Sunday afternoon.

Visit www.thebarnatberryfields.co.uk for opening hours, offers, events and more!

The Barn . Berryfields Farm . Meriden . CV7 7LB . 01676 522 155

Festive Menu

Visit our website
to see our Christmas menu
& to book a table
Available between
23rd Nov - 23rd Dec 2017

OPEN EVERY NIGHT!

Winter Warmers

Monday to Saturday from
4pm to 7pm

(23rd Nov to 23rd Dec)

Buy two drinks & enjoy the
cheapest drink free!

* Offer available on all draught beers
& wines served by the glass



**Order your turkey today
from The Barn At
Berryfields Farm Shop**

Farm Shop Opening Hours

Mon - Fri 9am to 5:30pm

Saturday 9am to 5pm

Sunday 10am to 4pm

Knowle Domestic Plumbing Service & Appliance Repairs

All Plumbing Work Undertaken

- ***Burst pipes/leaks***
- ***Taps, Sinks, Waste Units***
- ***Ball Valves, Overflows***
- ***Tanks, Cylinders, Immersions***
- ***Toilets, baths, Showers***
- ***24 Hour Emergency***

Appliance Repair Services

- ***Washing Machines***
- ***Dishwashers***
- ***Tumble Dryers***
- ***Electric cookers***
- ***Vacuum Cleaners***

£10 OFF for first time customers with this ad.

Valid until: 10th January 2018

***12 month guarantee, same day call-out
special rates for OAP's***

Office: 01564 730183

Mobile: 07770 698196

christmas countdown

Welcome to the December issue of The Knowle & Dorridge Directory.

By the time this arrives I'm sure you'll all be counting down the days to Christmas, whether it's due to excitement or if you just want life to get back to normal! Apart from the excitement of the big day, there's always lots of other things going on at this time of year – check out page 11 to see what great new films are on at the cinema this month and what local pantomimes are playing. If you'd rather curl up in the warmth of your own home, have a look at our book reviews on page 10 or try making pecan pie from our recipe on page 54. For those of you that eat too much over Christmas and who want to help others, why not try the 25th Lions Festive Walk from Baddesley Clinton National Trust on 27th December (more details on page 6). There's a choice of different length routes so you can do what you're comfortable with.

I wish you all a very merry Christmas and a happy and healthy New Year.

Zoe

Zoe Reece

Tel: 07557 220585

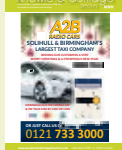
Email: zoe@dorridgedirectory.com

www.knowleanddorridgedirectory.com



contents

the knowle & dorridge



6 Local events

10 Book reviews

11 Cinema and theatre guide

48 Kids' page

50 Competition

51 Puzzles

52 Index

53 Useful telephone numbers

54 Recipe

Locally designed by: hotlobster design ltd **Printed by:** Warwick Printing Company

PLEASE RECYCLE THIS MAGAZINE

Tudor Rose Curtains Curtains and Blinds

designed and made for you!



www.tudorrosecurtains.co.uk

**NO JOB TOO BIG
OR TOO SMALL**

CHECK OUT
TUDOR ROSE CURTAINS
ON FACEBOOK



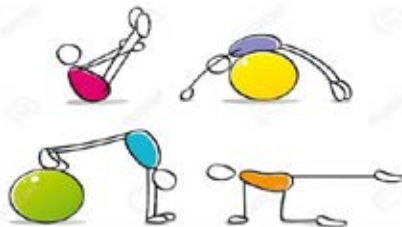
Answer Machine:
0121 445 2072

LOCAL INTERIOR DESIGNER
sj@tudorrosecurtains.co.uk

SARAH J HARPER
07518 851063

CALL FOR A FREE NO OBLIGATION QUOTATION

Pilates recommended by GP's Physiotherapists & Practitioners



Booking for January 2018

Monday 11.30am Beginners

Thursday 6.30pm Progressive +

Thursday 7.30pm Beginners

The Parish Centre Dorridge

Classes designed to suit your ability

To find out more call 07762 311074

www.centralenglandpilates.co.uk

16 years of Pilates expertise BSc Ba Hons

WINDOW FIX of SOLIHULL

DOUBLE GLAZING REPAIRS & INSTALLATION

- Misted/Broken glass units
- UPVC-Door/Locks/Hinges/Handles
- Windows-Locks/Hinges/Handles
- Patio Door-Tracks/Wheels
- Conservatory Roof Replacement
- Replacement Fascia & Guttering
- REPLACEMENT WINDOWS & DOORS

0121 704 1339

www.windowfixofsolihull.co.uk



Land Rover Sports
& Social Club

FORTHCOMING EVENTS

CHRISTMAS EVE MASQUERADE BALL 24th December 2017

Karaoke night and
Masquerade Ball in the
Greenleigh Room.
Evening dress and mask. 8.30pm till late.

All welcome – you don't need to be a member. Free.



ALADDIN (PANTO) 27th December 2017

A thrill a minute pantomime
that promises a brilliant time.
With jokes and slapstick,
song & dance, betrayal &
romance. Performance starts
7.00pm. Tickets £3.00 each –
under 2s FREE.

Tickets online from www.landroversc.co.uk



CALL DURING OPENING HOURS TO PICK UP TICKETS FROM THE CLUB

Billmore Green, Solihull, B92 9LN • 0121 742 5490

community events

Christmas Party Nights

**St Johns Hotel, 651
Warwick Road, Solihull
1st – 31st December**

Bring your party to our party at the St Johns Hotel! 3 course meal with a glass of sparkling wine on arrival. Only £35 per person. Call 0121 711 3000 for more details.



**Friendly Folk – folk
dance group
Elmdon Heath Community Centre,
Corneyx Lane, Solihull, B91 2SF
Monday evenings:**

7.45 – 10.15pm

Folk dance group established in Solihull for 30 years. Folk dancing is an activity which combines physical and mental exercise in a sociable atmosphere. Friendly Folk welcomes newcomers of any, or no, experience, with or without a partner. Cost £3.50 per week, 1st week free. Call 0121 444 1492 for more details.

Peter Pan-to

**St. Mary's Hall, Hobs
Meadow, Solihull B92 8PN
14th – 16th December**

The Moot Players are proud to present "Peter Pan-to", based on the classic story by J.M. Barrie. This will be full of the usual panto fun, and tells of how Wendy and her two brothers travel to Neverland with Peter Pan. There they meet up with his band of Lost Boys and battle against Captain Hook and his pirates, along with his sidekick, Smee. Tickets are

£8.00 for adults and £6.50 for concessions, and can be booked by calling 07760 306605.

25th Lions Festive Walk Baddesley Clinton House Wednesday 27th December

Walk off your Christmas pudding. Bring your friends and relatives, just turn up and make a donation – That's the invitation from Knowle and Dorridge Lions. This year's special 25th FREE Festive Walk from Baddesley Clinton National Trust House offers a choice of 1.4, 3.9, 5.3 & 10.7 miles signed circular routes and an opportunity to help the Lions raise funds for the new Breast Cancer Haven, Headway Birmingham & Solihull, with half going to Lions locally determined causes. Details & registration form online at www.KnowleandDorridgeLions.com/ walk or call 08458 335 894



KNOWLE LIBRARY

- **Jellybeans** - held monthly on a Thursday morning for story-time and rhymes for the under 5's
- **Alphabet Club** - and story-time session for the under 5's, held on alternate Mondays at 2 - 2.30pm
- **Knowle Readers Circle** - meet monthly on Fridays at 2.15pm
- **Knowle Society** - available each Saturday morning for

local history enquiries

- **Under-fives Rhyme Time** - every Friday at 2pm
- **Coffee mornings** - on the first Thursday of the month at 10.30 - 11.30am
- **New monthly Saturday Craft Club** - for ages 10 - 12 years at 11am - 12noon

[www.solihull.gov.uk/Resident/
Libraries/Find-a-library/
knowlelibrary](http://www.solihull.gov.uk/Resident/Libraries/Find-a-library/knowlelibrary)



www.progressionarchitects.com

01564 730 191

info@progressionarchitects.com

Chartered Architects Gary Winn RIBA and Dean Poulton RIBA are Progression Architects and have been based in Solihull since 1992. They are about to celebrate 25 years in practice.

The practice specialises in the design of domestic house extensions, one off houses and conversions, although they also have some corporate blue chip clients.

They offer an initial free appraisal of your project, within the solihull area, where their wealth of experience can be offered to examine your initial ideas and work with you to progress your ideas into a design.



"a bespoke building designed for you"



"designing
your
dream space"



"envisioning ideal layout"



"taking the
stress out of
construction"



www.progressiontownplanning.com

01564 730 191

info@progressiontownplanning.com

At Progression we are also Chartered Town Planners and members of the Royal Town Planning Institute. We specialise in dealing with planning applications and negotiating with the Local Authorities. We also prepare, submit and attend Planning Appeals, where applications are refused, putting our case forward from an applicant's point of view.

As we are also Architects, we tend to think through our solutions creatively, at times from a perspective that is not immediately apparent. As Arboriculturists, we work together where tree issues meet planning issues, such as Tree Preservation Orders.

Santa's Grotto

@ EarlswoodGLC

Every weekend from Saturday 25th November
PLUS Monday 18th to Saturday 23rd December

*Enjoy an un-rushed visit with Santa and
choose a quality toy from Santa's Toy Shop!*



TICKETS ON SALE NOW

For details and to book, visit
www.earlswoodglc.co.uk/grotto

eglc EARLSWOOD[®]
GARDEN & LANDSCAPE CENTRE

FORSHAW HEATH ROAD | EARLSWOOD | SOLIHULL | B94 5JU

t. 01564 702314 | sales@earlswoodglc.co.uk | www.earlswoodglc.co.uk

Hatton
ADVENTURE
WORLD

ADVENTURE. ANIMALS. ACTION.

ENCHANTED

CHRISTMAS KINGDOM

Weekends 25th November - 24th December
PLUS 18th - 22nd December 2017

**Book online
early for great
savings**

**Timed entry
and minimal
queues**

**Fantastic all
day family
entertainment
programme**



A Truly Magical Experience

www.hattonworld.com

a good read

reviews By Willow Coby

The Runaway Jury

by John Grisham

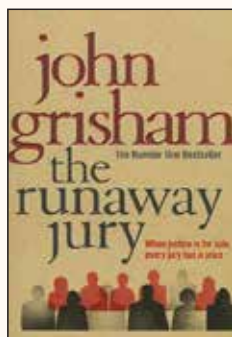
Whether you read legal fiction or not you have most likely heard of John Grisham. One of the biggest selling authors in the world, Grisham was a lawyer before he turned to writing and his expertise is evident in his novels.

As the title may suggest this novel focuses on the jury in a trial. Whilst we like to think that trial by jury is fair and gives both sides an equal chance, what if it was manipulated from the beginning?

A major case is brought against a tobacco company by the widow of a smoker who died from lung cancer. A verdict against the tobacco company would have huge implications – and cost – for the industry so naturally they are prepared to fight hard. But it would seem that one person is determined to get a guilty verdict. A young man called Nicholas Easter is selected at random for jury service and ends up in the final twelve.

However, when a man employed by the tobacco company to find out more about the jurors tries to look into his background, it appears that he has no background and his selection may not have been random after all.

And Easter is out to ensure that he gets the verdict that he wants – no matter what the cost.



Miss Peregrine's Home for Peculiar Children

by Ransom Riggs

15-year-old Jacob lives in Florida and dotes on his elderly grandfather, Abe. From the age of six Jacob listened to his stories about his life during the war. He escaped from monsters in Poland and was sent to live in a mysterious house on an island just off the coast of Wales run by Miss Peregrine. Abe recounts tales of the other children he lived with and shows



Jacob what they looked like using a mysterious set of photographs. As Jacob grows up he comes to view the stories as fanciful and made up, and the images as nothing more than trick-photography. Everything changes when Abe dies in a violent manner and Jacob alone sees the strange creature in the woods that killed him. Struggling to cope with the death, Jacob discovers a 15-year-old letter from Miss Peregrine and persuades his parents to take him to the Welsh island to put together the pieces of Abe's life.

Here Jacob discovers that the monsters his grandfather fled from in Poland were more than Nazis and that the stories were maybe not so fanciful after all. The children his grandfather lived with were very peculiar indeed.

This first novel (and first in a trilogy) is a fascinating read. Spread throughout the book are authentic photos collected by the author which are weaved into the story. Definitely one for older readers (marketed as young adult and rightly so) this original story will have you reaching for book two immediately.

a taster of what's on in december & january ...

CINEMA



Wonder

from 1st December

A boy with a facial deformity joins a new school. 'Wonder' is the heart-warming story of Auggie Pullman, a young boy with a facial deformity who's spent his life in and out of hospitals, as he joins a new school.



The Man who Invented Christmas

from 1st December

The story of how Charles Dickens wrote 'A Christmas Carol'. 'The Man Who Invented Christmas' is the true story of how Charles Dickens wrote the beloved classic novel 'A Christmas Carol', and created a holiday tradition by doing so.

Star Wars: The Last Jedi from 14th December

Picking up right where 'The Force Awakens' left off, 'Star Wars: The Last Jedi' finds Rey, after finally discovering Luke Skywalker, beginning her training in the ways of the Force. Starkiller Base may have been destroyed, but the First Order are far from defeated and the war between them and the Resistance grows ever more fierce. The Resistance could really use a Jedi Knight on their side – but Skywalker has decided that it's time for the Jedi to end.



To book please visit www.cineworld.co.uk



THEATRE

The Core Theatre, Solihull (formerly Solihull Arts Complex)

Jack and the Beanstalk

Various dates between 8th and 31st December

Solihull's own 'Mr Panto' Malcolm Stent is treating audiences to one final dollop of sparkling fun and silliness as he takes to the stage in his panto finale... Jack & The Beanstalk - after an amazing 27 year pantomime run.



Lily and the Little Snow Bear

Wednesday 20th – Sunday 24th December

There are just two more sleeps until Christmas and it's snowing already! Lily discovers a trail of soft little footprints, so she's in for a very big SURPRISE! This funny, heart-warming tale of friendship is the perfect treat for Christmas with exquisite puppets, enchanting music and a magical snowy setting. For ages 3+.



The Syd Lawrence Orchestra – Golden Night of Swing

Wednesday 17th January

In 1967 Syd Lawrence formed what was to become the UK's most successful and longest running Big Band, performing in theatres all over Europe and regularly featuring on many TV shows. Come and join this wonderful Orchestra to celebrate 50 glorious years of swing!

To book please visit www.thecoretheatresolihull.co.uk

Exceptional vision ...



Are you looking for a legal adviser that delivers wise and effective solutions?

Look no further.

Sydney Mitchell is a trusted Legal 500 law firm that will watch over your legal affairs.

We ensure that you receive quality legal advice.



“A professional service dealt with by delightful, helpful professionals..”

Birmingham

T: 0121 698 2200 · F: 0121 200 1513
DX 13054 Birmingham 1

Shirley

T: 0121 746 3300 · F: 0121 745 7650
DX 13856 Shirley 2

Sheldon

T: 0121 700 1400 · F: 0121 722 3127
DX 21801 Sheldon

Providing legal advice for generations

www.sydneymitchell.co.uk





TARGETED LEAFLET PRINTING AND DISTRIBUTION

Leaflet printing

5000 A5 colour double-sided leaflets for £135

5001 -10000 for £270

Leaflet distribution

5200 leaflets for £150

**Delivered to 5200 homes in
Knowle and Dorridge**

**Contact Zoe Reece on 07557 220585 /
zoe@dorridgedirectory.com**



Using holistic treatments, physical and emotional issues like stress, insomnia, tension etc, are improved. For skin confidence, I have various facial treatments using pure, safe and beneficial products. Discounts for under 18s, for certain treatments.

Reiki
Indian Head
Hopi Ear Candle
Essential Oil Back Massage

Express Facial
Luxury Facial
Skin Analysis Facial
Eye Treatments

Please contact Sara Henry on



07551 154446



mytimespa



mytimespa.co.uk

Athuruga Hair Salon, 2571 Stratford Road, Hockley Heath, B94 6NL
Free parking at Miller & Carter. Cards accepted. Gift vouchers available.

10% discount on your first treatment, with this advert.

LIMITED PLACES AVAILABLE
NEW TERM COMMENCES FROM
THURS 4TH JAN 2018 & MON 8TH JAN 2018
CALL/TEXT TO REGISTER



MONDAYS

Body Conditioning 09.20 to 10.20

***Pilates** 10.20 to 11.20

at Downing Hall, Knowle, B93 0JU



THURSDAYS

***Pilates** 09.10 to 10.10 & 10.20 to 11.20

at Downing Hall, Knowle, B93 0JU



THURSDAYS

***Pilates** 19.30 to 20.30

at Dorridge Village Hall, Dorridge, B93 8QA

All ages and abilities welcome.

Pilates taught at 3 levels:

Beginners, Intermediate & Advanced

For fees & term times, go to:

www.gkpilates.co.uk

*Places are limited and should be pre-booked

To reserve a place, contact Gaynor Kunneke
 Fitness Instructor and Registered Osteopath:

Tel or Text: 07729 712038 or

Email: gk.osteopath@outlook.com

ByteSupport

Home and business IT support

PC problems fixed. Virus and malware removal. PC tune-ups. Data recovery. **New PC setup.** **Broadband,** email and server problems resolved. **Free advice.**

For a **professional, friendly** and **dependable** service

Peter Johnston
0790 151 2544

www.bytesupport.co.uk

No call-out fee.

20yrs professional experience



Sew2it

Sewing School

Henley-in-Arden (opp Finest Catch)

Now Open

Offering courses from beginners to those wishing to enhance their skills in...

- Dressmaking
- Sewing
- Pattern Cutting
- Lingerie
- Corsetry
- Children's Parties

Also available:

gift vouchers

After School Club for 8-11yrs and 12-18yrs

For more information contact Stephanie

Tel: 01564 792083 or 0777 865 0923

email: steph@sew2it.co.uk

or visit: www.sew2it.co.uk

THE **CARDIO** SHOP

***Staying fit is for life
not just for Christmas***

FITNESS AND WELL-BEING EQUIPMENT FOR THE HOME

Come and try our range of foot massagers, body toning vibration plates, exercise bikes, treadmills, core muscle equipment and nutrition products. Open every day apart from Monday at Yew Tree Farm Courtyard Shopping.

All the equipment can be purchased or rented. Rentals from under £10 per week.

A choice of Nutritional products now available to help you Diet

You can visit the Cardio Shop to try before you buy at Yew Tree Farm Courtyard in Wootton Wawen B95 6BY

CALL: 01564 792 410
www.thecardioshop.uk

THE **Dentists** **DORRIDGE**



Anti Wrinkle Injections
3 AREAS OF ANTI-WRINKLE
INJECTIONS

£180



**LET YOUR LIPS DO
THE TALKING**
1ml of Lip Filler

£225



**TEETH
WHITENING**

£180

**01564 779868
07779 804993**

info@thedentistsdorrige.co.uk

CROSSROADS SERVICE STATION LTD

A friendly, family-run business since 1969

- MOT Testing – Cars & Motorbikes
- Servicing & Repairs
- Air Conditioning Service & Repair
- Diagnostic Service & Repair
- Laser Wheel Alignment
- Tyres – Supplied & Fitted
- Qualified & Experienced Staff
- Courtesy Car or Collection/Delivery available

**OPEN 6 DAYS
A WEEK**

MON – FRI 7.30am – 6pm

Sat 7.30am – 1pm

MOT's while you wait!



599-601 Tanworth Lane, Shirley, Solihull B90 4JE

Tel: 01564 703225

www.crossroadservicestation.co.uk

VAT No.: 113213041

Cognitive-behavioural therapy (CBT)

THE MODERN THERAPY OF CHOICE

Equanimity CBT Ltd: High quality CBT for individuals, the public and independent sectors. GP Referrals Accepted

**Work related stress? Anxiety? Depression? Low self esteem?
Compulsive behaviours? Anger management? Adolescent behavioural problems?
Aggressive driving? Panic attacks? Phobias? Emotional distress?**

CBT: Not just talking, but making a real difference.

www.equanimitycbt.co.uk

Day and Evening Appointments Available at:
**The Cottage Therapy Centre, Kenilworth
and Wassell Grove Lane, Hagley.**

Contact: enquiries@equanimitycbt.co.uk
Telephone 0844 693 1282 for a
free 15 minute telephone consultation.

B.A.B.C.P. Accredited CBT Psychotherapist.

**Approved Health Care Provider for
AXA-PPP, Aviva, Pruhealth, CIGNA, Simply Health and WPA.**



toys! toys! toys!

The song goes, 'It's the holiday season, And Santa Claus has got a toy, For every good girl and good little boy...' But which toys?

Luvabella: Unless you are completely doll-phobic (the word is pediophobe people!) this will enchant any little girl and probably a few boys. This is an AI Furby-made-human. The more she's played with the more she responds. She moves her arms and legs and has an amazingly expressive face. She will even start saying a few words.

VTech Kidizoom Flix: If you are not enamoured with the creepy little Luvabella then try Flix. He's a funky friendly little alien with face recognition software installed so he can recognise your child. You can change his eyes and skin colour and he has a camera and video so you can carry out secret reconnaissance missions. He detaches from his tripod and comes in pink or blue.

Lego: You cannot go wrong with Lego, for any age and either sex. The trend for programmable toys this year continues with Lego Boost. Five models - this is Vernie the robot - which can be brought to life by coding using a free app.

Experimake Sludge and Slime: A great take on the science kit. Icky gooey experiments that kids and lots of adults will enjoy playing with.

SoundMoovz: One for the whole family. Wearable, app-connected motion-activated musical bandz. Move your wrists and ankles to create beats, rhythms and music, layer your beat onto a song and connect to a wireless speaker for even louder fun. Watching Grandma showing off her moves will add to the holiday spirit.

Lapworth Fuel Supplies

Spring Lane Nurseries, Spring Lane,
Lapworth B94 5NS

**Logs seasoned and kiln dried
Coal and Kindling**

Free delivery on orders over £50

**Call Paul
07379 139 492**

Lady Katherine Housing & Care



The Court Of Lady Katherine Leveson

Sheltered Housing

(Live independently with the added value of support on site)

Residential Care

(Have your personal care needs met in a truly unique and vibrant Care Home)

Respite Care

(Come and have a short break with us or give your loved one a short holiday with us while you have a break)

Enablement

(Spend some quality time with us after a hospital stay, build up your strength for that return home)

FOR FURTHER INFORMATION

contact

Chris Mundell

Fundraising & Marketing Officer

01564 772415 / 01564 772850

cmundell@leveson.org.uk

Temple Balsall, Knowle, Solihull, B93 0AN

let it snow! let it snow! let it snow!

A white Christmas is something many of us dream of, but how much do we know about snow?



Snow is made of a bizarre and complex substance which we take completely for granted – water!

Water is a liquid at room temperature, unlike other substances with similar-sized molecules, such as ammonia or methane – these are gases.

Water requires more energy to boil it than other liquids and unlike most substances which shrink as they freeze, water expands as it turns to ice. As it turns out this is rather important. Ice is less dense than water so it floats. If it became more dense like most substances lakes would freeze from the bottom up and aquatic life would die. But because water freezes from the top down, the floating ice forms a layer on the surface which insulates the water beneath allowing it to stay liquid and all the swimming creatures to survive.

Few people know that for snow to fall at temperatures higher than -40C a special particle called an ice nucleus is required. Snow seeds as they are known include fine particles of soil, dust, and volcanic ash. These 'seeds' pass through the clouds of water vapour in the upper atmospheres and it is on their surface that ice crystals form which become snow. Snowflakes are all different because of the way they attract new water to their 'corners'. As the crystals fall through the atmosphere they pass through different layers

of temperature and humidity, and get tossed around by the wind. The interplay between the snow seeds, random water droplets and their need to grow in a hexagonal fashion means that each snowflake grows rapidly in a unique way until they are large enough to fall as snowflakes.

The perfect snowflakes that we see on Christmas cards are actually quite idealised. Most snowflakes are imperfect, but they do have an underlying symmetry which has been noticed by humans for thousands of years. Most flakes are 1cm or less across but occasionally atmospheric conditions conspire to form giant snowflakes. In 1915 snowflakes 10cm across fell in Berlin, and in Montana in 1887 flakes 38cm (15 inches) across were recorded.

But if snow is made of ice (which is clear or possibly slightly blue), why is snow dazzling white? Well the reason is because of the complex structure of snowflake crystals. Light rays bounce around from one crystal of ice to another, randomly until they find their way out. Because of the very short distances between the reflective surfaces the light rays are efficiently scattered and none are absorbed, and if no light is absorbed then a substance appears white.

If we do have a few flakes this Christmas then you can amaze your friends with how much you now know about snow!

All together now... 'I'm dreaming of a white Christmas...'

Oakland Group

www.12vgardenlights.com



Open Up Your Garden At Night



Create an **EXCITING** and **VIBRANT**
Living Space in your **Garden at Night** with our
safe **Low Voltage GARDEN LIGHTS**

PLUG
&
PLAY

Simple, Safe & Easy to Install

Do It Yourself or We Can Design & Install For You!

ENERGY
SAVING



"Having seen the lights last night we are blown away. It looks like we are at some amazing house in the south of France - could not be happier." M.B. Tanworth 02/6/17

"I would highly recommend 12vgardenlights.com to anyone considering outdoor and garden lights - you will not be disappointed!" C.T. Warwick 18/5/17

0121 416 0408

info@12vgardenlights.com

Dimension Landscape & Driveways

- Quality driveways, patios and garden landscaping
- Competitive prices and reliable service
- Using our own in-house expert contractors and equipment

Call us now for your free no obligation quote and to find out about our New Year Spring Bargains



0121 733 1463 / 07799 428557

www.dimensiondriveways.co.uk
barney.dimension@icloud.com

4200 Waterside Centre, Birmingham Business Park, Solihull Parkway, B37 7YN

10% OFF
all orders if you quote
reference KDM.

Mainstream

Windows, Doors and Conservatories

Mainstream is a specialist manufacturer of high quality windows, doors & conservatories. We have a huge range of products including bifold doors, orangeries, glass extensions, pvc and upvc windows.



Over 20 Years Experience

For over 20 years, our award-winning FENSA regulated firm has successfully manufactured and supplied windows, doors and conservatories to our clients.

The Personal Touch

Our company is owned and run by three experienced directors that work in a 'hands-on' role. No job is too small or too large for us and if you are looking for something different, we can make bespoke products just for you.

High Quality Standards

We pride ourselves on attention to detail, and all of our products are manufactured 'in-house' at our Head Office in the West Midlands. And the same goes for our fitters – they are our own trusted staff, with many years' experience between them.

**Come and see our new high performance
Origin Aluminium Windows and doors.**

01564 320013

www.mainstream-doubleglazing.co.uk

safechoice



1018/1020 Yardley Wood Road,
Yardley Wood Birmingham B14 4BW
Office Tel: 0121 430 9150

A-door-able!

UPVC & Bifold Doors to Suit All Applications

Mainstream Windows is a leading supplier of all types of replacement domestic UPVC & Aluminium Bifold doors. Whether you are looking for a new front entrance, back entrance or garage options, Mainstream's expert team can advise you on the best product to suit your property, lifestyle and budget.

For front entrance and back entrance, there are three main types of products used in homes today – wooden, UPVC and composite doors.



UPVC Doors

UPVC doors are available in a wide range of colours and finishes and their comparative lower cost to alternative materials has made them popular in recent years. They also have other benefits, such as a higher resistance to weathering and generally require less maintenance



Bifold doors

Bifold doors are built to stack neatly to one or both sides of an aperture when open. This allows people to move freely from inside to outside or from one room to another. These can be used as room dividers or to open onto a balcony or terrace.

Composite Doors

As their name suggests, they are made up from several different materials to produce a robust, secure and attractive-looking to protect your home. The combination of materials, such as PVC, wood, insulating foam and GRP (glass reinforced plastic) results in a product that is very strong and requires no painting or varnishing to keep it looking good over its long lifetime. An occasional wipe with a damp cloth is all that is needed to keep it clean and retain its smart appearance.

Porches



Bill Boyce Decorators

A family run business with over 30 years experience

- Painting & Decorating
- Internal / External
- Offices, Restaurants & Private Houses
- Reliable
- Excellent Reputation
- All work carried out to a high standard
- Free Estimates



Call Bill on 07976 810680 or Dan on 07966 275134

89 Union Road, Shirley, Solihull, B90 3BY
Tel: 0121 744 0040 or fax: 0121 744 0312
Email: billboycedecorators@hotmail.co.uk
www.billboycedecorators.com

C. STEVENS ROOFING

EST FAMILY BUSINESS

NEW TILED ROOFS • GUTTERS
FLAT ROOFS • BRICK WORK
LEADWORK • SMALL REPAIRS
UPVC FASCIAS • CHIMNEYS



KNOWLE SOLIHULL
01564 790008 0121 733 1276

WWW.CSTEVENSTEROOFING.CO.UK

Stephen Smith & Son Plumbing & Heating Services

WORCESTER
Greenstar
Accredited
Installer



Gas Safe reg no: 198187
Natural Gas, LPG & Oil

Which?
Trusted trader

**Tel: 0121 247 4957
or 01564 200119**

**7 year manufacturer's
warranty on all Worcester Greenstar
gas boilers installed**

www.stephensmithandson.co.uk

"Family business. Local and reliable."

Work carried out includes:

- Boilers / Radiators
- Natural Gas - LPG and Oil Installation and Repair
- Bathroom Installations
- Landlord Gas Safety Inspections/Certificates
- Boiler Servicing
- Hot Water Cylinders (vented and unvented)
- System Powerflushing
- Cold Water Tanks
- Shower Installations / Repairs
- Pipework
- Underfloor Heating
- Solar Installations
- Renewable Energy



Grange Blinds

Many of you already know Russ Fryer of Grange Blinds who, until 2006, worked for a well known national blinds company. Russ saw an opening to provide customers with a wide range of quality blinds and curtains at realistic competitive prices with a personal belief in 'top notch' customer service.

Blinds

- Vertical
- Roller
- Roman
- Venetian
- Conservatory Blinds Specialist
- Wooden
- Pleated
- Perfect-fit
- Motorised

Internal Plantation Style Shutters

- 6 Louvre Sizes
- Whites & Naturals
- Real Wood
- Man-made

Curtains

- Curtains
- Pelmets
- Valances
- Poles
- Tracks
- Matching Cushions

*Thank you for supporting
local business*



**10%
OFF**

Verticals, Rollers &
Venetians on production
of this advert



☎ 01564 702036

☎ 07850 833330

🌐 www.grangeblinds.co.uk



Ian Hounsell

CARPET SUPPLY & FITTING SERVICE

WHY COME TO US? WE WILL COME TO YOU!

- ✓ No Job too big or small
- ✓ Supply & fit or fit only
- ✓ Repairs & re-adaptions



Tel: 01564 772324 Mob: 07831 814 588

Email: hounsellcarpets@gmail.com Covering Solihull & Surrounding Areas

111 Purnells Way, Knowle, Solihull, West Midlands B93 9ED

A Good Reliable Service Guaranteed

TO ADVERTISE HERE

Contact Zoe Reece on 07557 220585 /
zoe@dorridgedirectory.com

Advertise

D.A. MANDER & SON Ltd

PROFESSIONAL FITTER AND SUPPLIER OF QUALITY CARPETS

*Don Mander does not have retail premises. If you need him
please call him direct— the only way to buy carpets*



EASIER

*Than walking round
lots of shops*

CHEAPER

*No overheads
cutting costs*

ACCURATE

*See colours in their
true light*

CONVENIENT

*View in the comfort of
your own home*

*Really pleased with job done by Don and family to
install our hall, stairs and landing carpet, quick,
knowledgeable and professional, wish we had found
them sooner! Would highly recommend.*

Claire Price, Solihull

*For the best carpet fitters in the UK look no further
than Don, Davina and Luke Mander. Experts in
their field, trustworthy and extremely knowledgeable.
No job is to big or too small. They carried out a
repair job on our stair carpet which had been
ruined by the cat. It is now as good as new.*

Carol Tromans, Solihull

01564 700200

We can uplift and remove existing carpets and move furniture

Mobile: 07976 778694

FREE ESTIMATES

91 Longdon Road, Knowle B93 9HT

**See our Review's at
Freeindex.co.uk**

PRO LINE

PROFESSIONAL LINE UK LTD

REPLACEMENT PVCu FASCIAS & GUTTERS

IT'S THE ONLY PROPER WAY

Don't be fooled by cheap prices! Capping over existing Fascias will ruin your home! It causes sweating, will rot away your old boards and eventually put dry rot through your roofing timbers.

Don't be fooled by those who say they cut rotten wood first, and then cap over.
OLD WOOD WILL ROT, NO MATTER WHAT!

CALL NOW FOR NEW YEAR DEALS

We promise to beat any genuine quote!

FREEPHONE: 0800 007 5431

TEL: 0121 690 2275 MOBILE: 07990 882 917

I will call, survey and explain exactly what the installation entails, with no obligation on your part. We would however be pleased to quote you for any additional areas. If you have had new Gutters & Down Pipes in the last ten years, it is possible to refit them afterwards.

Central Boulevard, Blythe Valley Business Park, West Midlands, B90 8AQ

We also install Windows, Conservatories, Porches, Cavity Wall Insulation, Felt & Flat Roofs



FAMILY BUSINESS – ESTABLISHED FOR OVER 20 YEARS

ADKINS PLASTERERS

SPECIALISTS IN: Interior and Exterior Plastering

WALLS • CEILINGS • COVING • RENDERING
• DRYLINING AND WET PLASTERING

Reliable, friendly and clean service
All work guaranteed

For your free estimate just call us on

07977 354323 / 07538 349991 / 0121 680 2248 or email: AdkinsPlasterers@hotmail.co.uk





Why not invest in a new driveway or patio to enhance the appearance and add value to your property?

Approved Drives and Landscapes offer a range of services to help improve all areas of your home, including:

Clay & Block Paving - Tarmacing (red or black) -
Pavios - Brickwork - Slabbing - Gravel -
Landscaping - Fencing - Property Repairs
Roofing Repairs - Driveway Maintenance
(Pressure cleaning & sealing - weed free)

Proud members of



Find us in/on



www.centraldrivewayslimited.com

Get in touch today for a FREE quotation

T: 0121 702 1456 M: 07748 577687

Michael.central@icloud.com



**IN SUPPORT OF
HELP for
HEROES**

plumb crazy!

Plumbing is best left to the professionals



Within two months of moving to our current home just before Christmas last year, our loo developed a leak so we called a plumber. A fortnight later we developed a problem with the shower and called him back. Then all our radiators started leaking and the ground-floor toilet died. Keith the plumber (we were on first name terms by this point) was horrified at the 'botched DIY' which the previous owners had carried out and he carefully and systematically set about sorting out the almighty mess, and in return we parted with enough cash to fund his New Year holiday in Ibiza (only joking, Keith was and is one of the good guys).

Plumbing is best left to the experts and not just in an emergency. Changing a tap washer is one thing but DIY interference with plumbing systems can not only result in serious damage and expensive repair bills (as we now knew to our cost) but a potential health hazard.

If you do fancy a spot of DIY please know that you are subject to the same regulations and controls as a professional. Everything connected to a water supply has to comply with statutory requirements and failure to do this may result in prosecution. In our case a stiff letter from a solicitor helped recoup some of our costs.

The Chartered Institute of Plumbing and Heating Engineering (CIPHE), is the professional body for the UK plumbing and heating industry. Its 12,000 members abide by a code of professional standards. They agree to:

- Perform professionally, competently and responsibly (including having adequate insurance)
- Safeguard the environment and public health and safety
- Comply with all relevant laws,

regulations, standards and codes

- Broaden, improve and maintain their skills and knowledge
- Uphold the dignity, standing of the institute and the plumbing, mechanical engineering services industry.

So how do you find a good plumber?

- The best way is to ask around. Who do your friends and family use? We found Keith through a friendly neighbour.
- Use a member of the IPHE whose members have to hold qualifications or demonstrate extensive experience.
- Get at least three written quotes and find out whether the plumber charges by the hour or per job.
- Never pay up front and don't be scared to ask questions. We actually didn't have to ask many questions of Keith. He talked through all the issues and options before doing any work each time.

How to help yourself

- Know the location of and label the stop valve on the incoming supply main.
- Locate, identify and label all other stop valves. Check all of them periodically.
- Know the location of any drain valves by which your water and / or heating system may be drained.
- Properly insulate all exposed pipes.
- Inspect your cold water tank regularly and if it is metal make sure there are no signs of corrosion.
- Have your central heating serviced regularly. The IPHE recommends annual servicing.
- Clean, safe water is one of the essentials of life. Use your local professional. It's too important to leave to chance.

Cullen

Plumbing & Tiling

17 Whitacre Rd, Knowle
cullenplumbingandtiling@gmail.com

Tel: 07896 862 916

Established in 2005

City & Guilds

Qualified

- Full bathroom and ensuite design and installation to the highest standards with complete project management from start to completion
- Kitchen Sinks and Taps, Dishwasher and Washing Machine Installation
- Central Heating & Radiators
- General Plumbing Maintenance & Repair
- Showroom Finish Wall & Floor Tiling for bathrooms, kitchens, hallways and conservatories
- Specialist in ceramic, porcelain, natural stone tiling
- Business built on recommendation and reputation

All Work Guaranteed

Reliable Honest Service

References and Portfolio of Work Available



**Call Alex Cullen
NOW on 07896 862 916
For a free no-obligation quotation**

Kav's Bathrooms & Plumbing Specialists

— AFFORDABLE LUXURY! —



Bathrooms | Tiling | Plumbing | Electrics | Showers | General Plumbing
Free Quotations | 15 Years Experience | All Workmanship Guaranteed

Mobile: 07599 085670

Email: deankavanagh200@icloud.com



Howard Yarnold Windows & Doors Ltd

Design, Build & Fit Aluminium & PVC-U
Windows, Doors & Conservatories



New Bi-Folding Doors



Now available 'A' rated UPVC energy saving windows

Special offer on our Superb
Bi-Folding Concertina doors
any colour. Ideal for entrance
from lounge to conservatory

- We can offer a style to suit any home.
- Advanced locking systems coupled with frames which are resistant to bending or the easy removal of glass make our windows less attractive to unwelcome visitors.
- Use of modern materials means our windows are virtually maintenance free, reduce noise pollution and provide thermal insulation in your home.
- Every frame is tailor made so fitting is a quick process with very little disruption to you.

FAMILY BUSINESS OFFERING HONESTY & PERSONAL SERVICE THROUGHOUT



Call Brian or
Ashley on:



0121 414 0808

e: sales@howardyarnold.co.uk

www.howardyarnold.co.uk

1 Birkdale Avenue, corner of Heeley Road, Selly Oak, Birmingham B29 6UB

a christmas truce

One of the most remarkable events of the First World War concerns the 'Christmas Truce' of 1914, in which the soldiers of the Western Front laid down their arms on Christmas Day and met in No Man's Land, exchanging food and cigarettes, as well as playing football.

The cessation of violence was entirely unofficial. There had been no prior discussion and troops acted spontaneously from goodwill, not orders.

The most famous account of events involves British and German forces; however, French and Belgium troops also took part. No-one really knows what initiated it. There were some reports that British troops heard their German counterparts singing Christmas carols and joined but there were also reports of German and British soldiers erecting signs wishing each other a 'Merry Christmas'.

Driven by feelings of goodwill, home-sickness



and combat-weariness some men crossed the lines with their hands up, and troops from the opposing side went to meet them. Commanders either turned a blind-eye or joined in. Food and supplies were exchanged and tools and equipment were borrowed. Games of football were played and bodies trapped within No Man's Land were buried.

In many areas the truce lasted for the whole of Christmas day but in some places the peace lasted much longer and it was several weeks before the bloody conflict resumed.



kill or cure!

Hangover cures to die for... possibly for real!

It's the morning after the night before! You feel as though Santa and all his reindeer are performing a festive version of Riverdance on top of your head. So you reach for a hangover cure...

How about pickled sheep eyeballs washed down with a tomato juice and brine cocktail? Mongolians swear by it apparently...rather than me!

In ancient Ireland hangover sufferers were buried in wet river sand. It was said to cure the worst of the symptoms. I'll pass thanks.

A college friend swore by a concoction he called 'Prairie Oyster': Crack an egg into a glass without breaking the yolk, add a splash of Worcestershire sauce and swallow whole. Even watching him drink it was enough to send me and my lurching stomach running for the bathroom.

Personally I have always found that if I've overdone the celebrations at a party then drinking a large glass of water before I turn in for the night



really helps. In the morning I drink more water with a recommended dose of paracetamol. If your stomach is a bit sensitive you can try an antacid to calm it down, then if possible go back to bed.

When you are ready to eat something try a banana. They are easily digestible and help to replace lost minerals, though many people do swear by a fry-up. Possibly the saltiness and protein-rich foods (bacon, eggs and beans) help there. The Scandinavian equivalent is pickles and fish but I suspect you really do have to be Swedish to entertain that notion.

The only way to completely avoid a hangover is to avoid alcohol. But most of us like a drink at Christmas so the best advice is to drink in moderation, don't mix drinks (wine or beer, not both), and alternate alcoholic tipples with soft drinks. That way you'll enjoy the morning after as well as the night before.



Enjoy the outdoors,
leave the indoors to us

Professional Housekeeping & Ironing Services

BRIGHT & BEAUTIFUL

A BEAUTIFULLY CLEAN HOME AND A BRIGHTER YOU



**FREE
Basket of
Ironing***

Bright & Beautiful know how difficult it can be to keep the outdoors from getting in during Winter! Muddy feet, paw prints and rain can take their toll.

That's where we can help. Bright & Beautiful is an affordable REGULAR, or ONE-OFF, housekeeping service that ensures your home sparkles all year round. In a bright and beautiful home everything is in its place, the laundry is done and the ironing is immaculate.

Make the most of the season and leave the CLEANING and HOUSEKEEPING to us...

CALL TODAY FOR A FREE CONSULTATION

01564 339 967

www.brightandbeautifulhome.com/henley-in-arden

PLEASE QUOTE CODE: ADS

*UP TO 1 HOUR OF FREE IRONING, WHEN YOU SIGN UP FOR A REGULAR SERVICE.



DECEMBER OFFERS

Save 50% off all Carpet & Upholstery Cleaning.
Why not take advantage of our great offers:

	Normal	Discount
Lounge	£50	£25
Landing		
& Stairs	£50	£25
Bedroom	£32	£16
3 Piece Suite	£90	£45

Classic Carpet Cleaning

For further information please contact

Telephone: 0121 682 7450 or Mobile: 07980 172963

www.classiccarpetcleaners.co.uk



Allow us to ease the pressure of keeping up with your domestic chores

We are your extra pair of hands!

- Flexible cleaning service – ranging from one-off spring cleans to regular cleans with your own dedicated lady.
- More than just a cleaning business – let us help with ironing, shopping, in fact most household tasks. The list is endless Just ask!
- Our team have many years experience and have been carefully vetted and interviewed in their own homes.
- We are proud of the standards our team work to and all ladies have an excellent reputation within the local area.



We have full
comprehensive
public &
employers
liability
insurance

Please give me a call to chat through your requirements.

Call Lorna on 0785 4071892

villagedomestic@gmail.com

Dorridge & Knowle Domestic Cleaning Services

- Small established cleaning and domestic help business
- Provide dedicated, friendly & trustworthy local ladies (CRB checked)
- Take pride in high standards and caring for customers' homes
- Regular service or one off spring cleans
- Ironing service available
- References available
- Comprehensive insurance
- Costs are not subject to VAT



For a FREE, no obligation quote,
please call Sue on 07809 567264



think social media.
think management.
call hotlobster.

What Hotlobster offers you:

- ✓ Social Media Management
- ✓ Responsive Website Design
- ✓ Graphic Design
- ✓ Branding
- ✓ Marketing
- ✓ Print Production
- ✓ Good Coffee!

studio@hotlobster.uk.com

0121 369 1977

www.hotlobster.uk.com



a history of christmas decorations

Every year we go with the children to choose a new Christmas tree decoration.

We don't do themed trees in our house so our annual tree is a history of the kids' eclectic and often eccentric tastes down the years. Traditional inherited hand blown glass ornaments nestle alongside a plastic gingerbread man, a gaudy fairy in striped tights, a robot, a festive dachshund, and a host of other unlikely characters. Every year is a delight of discovery as my teens and preteens unpack, reminisce and tease each other over their past choices.

But where did the idea of decorations originate and how did they evolve into what they've now become?

Tinsel originated in Germany in the early 1600s. Back then it was made from real shredded silver. Tinsel makers hammered the silver until it was thin, then cut it into strips. It was so popular that tinsel machines were invented to keep up with demand. Clearly silver was a little expensive and eventually the plastic variety took over.

We have the Germans to thank for baubles. They were invented in the 1840s by Hans Greiner. His original glass fruit and nuts developed into beautiful ornate ornaments which so charmed Queen Victoria that she brought them back to Britain.

As they were all hand-crafted the first, baubles were very expensive. Improvements in plastic manufacturing meant that cheaper versions became available, and baubles became available to the masses.

The green fir tree was originally used by



Pagans and Christians to celebrate winter. Pagans used branches of the fir tree to decorate their homes during the winter solstice, as a reminder that spring would come again. The Christians adopted them later.

The tradition of Christmas trees seems to have originated about 1000 years ago in Northern Europe. They were often hung upside down from the rafters. In modern times improved manufacturing techniques have allowed for the production of artificial trees which can be very difficult to tell from the real thing!

In Victorian times, Christmas trees were been decorated with candles. In 1895, an American man, Ralph Morris, was so concerned about the fire hazard of candles and Christmas trees that he invented the first electric Christmas lights, which are similar to those still in use today.

Over the years there have been glass and plastic variations of reindeers, stars, fruit, butterflies, birds and even festive dachshunds (see above!) but the debate still rages about whether there should be an angel or a star on top of the tree.

Merry Christmas.

Athos

solutions for the future...

BUSINESS SOLUTIONS

Chartered Certified Accountants



Athos has built up a professional team that goes the 'extra mile' as a matter of due course. This has been invaluable to our business and has greatly assisted us.

**Roger Green, Director
Menswear Company**

- Accounts
- Tax Returns
- Payroll and Auto Enrolment
- Bookkeeping and VAT Returns
- Tax Advice
- Management Accounts



Call and make an appointment for a free initial consultation where a bespoke fixed fee quotation will be provided.

T. 0333 400 7876

Athos Business Solutions Limited

1623 Warwick Road, Knowle, Solihull, West Midlands B93 9LF

www.athos.uk.com

enquiries@athos.uk.com





Please scan this QR
code into your handheld
device for more
information on
Wallace Robinson & Morgan

Wallace Robinson & Morgan

SOLICITORS

please see our
website for full
details of our
services &
current offers...

established 1855

independence • expertise • integrity



legal services for your
life&business

www.wallacerobinson.co.uk
enquiries@wallacerobinson.co.uk

SOLIHULL

4 Drury Lane, Solihull,
West Midlands B91 3BD
Tel: 0121 705 7571

DORRIDGE

17-19 Station Approach,
Dorridge, West Midlands B93 8JA
Tel: 01564 779393

Company & Commercial Law • Wills, Probate & Trusts • Lasting Powers of Attorney
Landlord & Tenant • Employment Law • Family & Collaborative Law
Commercial Property • Dispute Resolution • Residential Property

Specialist Advice



Wills & Trusts
Lasting Powers of Attorney
Probate & Estate Planning
Inheritance Tax Issues
Asset Protection



For more information or a no
obligation chat call us on:

01564 758055

www.probate-solicitors.co.uk

Richard Arney
Solicitor, TEP

Caroline Wilden
Solicitor, TEP

1705 High Street,
Knowle, Solihull B93 0LN

the christmas wreath

Until fairly recently in history, certainly up to Victorian times, people could never be certain they would safely survive the harsh winter.

So they developed rituals and displays to help them get through the darker days. One such symbolic display of hope was the Christmas wreath. The circular shape is symbolic of eternity or everlasting life because it has no beginning or end. From a Christian perspective it represents the unending circle of life, with the traditional Holly as the thorns on Jesus' crown and the red berries as his blood. Now we hang them on our doors and use them as table centrepieces because they look wonderfully opulent and festive.

The word 'wreath' is linked to the word 'wrist', both words describing the form of a continuous circular shape. This became fused with 'wrethe' from middle English which means a twisted band or ring of leaves. At this bleak time of year, it's traditional to use evergreens and other brightly coloured flowers, foliage, or fruits to



adorn a wreath. In past times the addition of expensive and rare fruits such as pomegranates, indicated wealth, but wreaths also included the display of pinecones, seashells and even imported products. Once the decorations were taken down, the edible parts would be eaten and the bounty of

summer could be enjoyed in the depth of winter. Making a wreath is fun and relatively easy. You can make a simple and cheap evergreen circle or push the boat out and create an elaborate bauble ring. You can buy a ring of flower-arrangers' foam. Soak it in tepid water, and then stick sprigs



of evergreen foliage from the garden, flowers, berries, dried fruits, nuts, and bows

into it using wire if necessary. Or you can make your own base by taking a ring of string

wire and covering it in moss or hay. This will need to be held in place using thinner gauge wire. You can then wire in foliage and decorations. I will just warn you about holly though; working with it can be a painful experience so wear gloves and maybe have a box of plasters handy! If you want to try something different you can use a circle of pine cones, dried leaves, threaded popcorn and cranberries or woven red and yellow dogwood cut from your garden and interweaved with battery-operated lights. Use your gardener's imagination. Happy Christmas gardening.

We are a family-run business offering a professional, friendly and reliable solution to all of your landscaping & fencing needs.



We're based in Kenilworth but work all over Warwickshire and the West Midlands.



- Full garden landscaping
- Slabbing
- Concrete & wooden post fence panel systems
- Feather edge board fences
- Storm damage and repairs
- Free consultations & advice
- Installation of shed bases & sheds

07852 713240 /07891 046187
01926 741835
 kenilworthfencing@gmail.com

Oakland Group

www.oaklandgroupuk.com



Complete Outdoor Services & Lighting



**Tree Surgery
& Hedging**



**Borders, Turfing & Outdoor
Maintenance**



**Outdoor & Garden
Lighting**



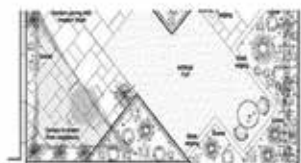
Fencing



Lawns & Mowing Services



Landscaping



**Garden
Design**



**Planting
& Irrigation Work**



Groundworks & Land Drainage



Commercial Works



Customer Feedback



Emergency Works

"Oakland have to be one of the most proactive businesses we have the pleasure to work with... I would highly recommend them to anybody who requires dependable service."

Gillian Cain, Audi Birmingham, 31 July 2017



01564 758608
info@oakland-group.co.uk

Hampton

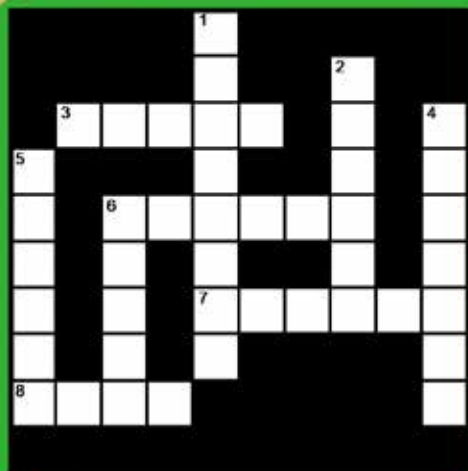
Gardening & Landscapes Ltd

Patios & Landscaping
Fencing
Lawn Mowing
Hedges & Trees



Office: 01675 446 174 Mobile: 07827 613 168
www.hamptongardening.co.uk

Kids Page



Christmas Crossword

Across

- 3 Santa's helpers (5)
- 6 Santa's transport (6)
- 7 Metallic tree decoration (6)
- 8 Often tops a Christmas tree (4)

Down

- 1 We give these at Christmas (8)
- 2 The make the Christmas tree glow (6)
- 4 The most famous reindeer (7)
- 5 Sung at Christmas (6)
- 6 Father Christmas (5)

Name the Christmas Carols



Q. What should you sing at a snowman's birthday party?

A. Freeze a jolly good fellow!



Name the Christmas Carols - Answers
 1. The holly and the ivy
 2. I Saw Three Ships
 3. Silent Night

the jigsaw revival



I was Christmas shopping recently and for the first time in many years found myself browsing jigsaw puzzles. I was mesmerised by the number of different types and designs.

There were funny ones, quirky ones, puzzles with irregular-shaped pieces, gloriously beautiful reproductions of famous works of art, extra-tricky pictures of boxes of sweets, or baked beans, and some fabulous three-dimensional puzzles. These were not the jigsaws of my youth. The jigsaws I remember came in faded boxes with boring photos of country cottages, or a generic blue-green landscape on the lid. No, these jigsaws looked enticing and exciting. A jigsaw revival seems to have taken place and I had somehow missed it.

Jigsaws actually originated in the late 18th century, when European map makers pasted maps on to wood and cut them into pieces. They were a useful way to teach children about geography.

Puzzles as an adult pastime emerged around 1900. They were expensive because each piece was cut individually, but they quickly became popular social pursuits in country houses for weekend parties.

As production became cheaper they became popular with the masses too. In the interwar period of the 1920s-1930s many companies used them as advertising gimmicks. Lots of jigsaws from that period depict black and white photographs of factories and workers or products. We aren't talking high art here but if you come across them in charity shops they possess their own charm.

Jigsaws can be a silent and calming activity, or done in pairs or groups they can be sociable

affairs. They are also gloriously cheap compared with other forms of entertainment, which explains why weekly cardboard puzzles became a national obsession in the US after the economic crash of 1929; in fact so many people wanted them that there was a national jigsaw famine!

In our own current slow economy and extended period of austerity jigsaws seem to be gaining in popularity again. Like adult colouring books they are absorbing and stimulating but not overly demanding so can be seen a mindful activity and as such may be beneficial to our mental health.

Dame Margaret Drabble the author became a fan of jigsaws when her husband was undergoing extensive treatment for cancer. She couldn't concentrate on books or crossword puzzles but jigsaws helped her to focus. She says they gave her an illusion of control, creating order from chaos during a period of intense stress, and she feels they actually saved her sanity. She wrote a book, 'The Pattern on the Carpet,' about her personal experience.

Our own queen is said to be a huge jigsaw fan. Apparently she borrows regularly from the The British Jigsaw Puzzle Library. This wonderful institution (of which I knew nothing prior to researching this article) houses thousands of beautiful hand cut wooden jigsaw puzzles, which can be borrowed. Membership for the jigsaw enthusiast in your life, along with Drabble's book might be a rather inspired Christmas present this year perhaps?

Happy puzzling.

COMPETITION



WIN 2 tickets

to see **An Audience with Rev. Richard Coles**

Tuesday 30th January, 7.30pm

The Core Theatre, Solihull (formerly Solihull Arts Complex)

For your chance to win these tickets, worth £40, visit the Core Theatre website page for this event - www.thecoretheatresolihull.co.uk - to find the answer to this question:

With which chart topping 80s band was Richard Coles a member of?

Email your answer to: thecoretheatre@solihull.gov.uk – and please put

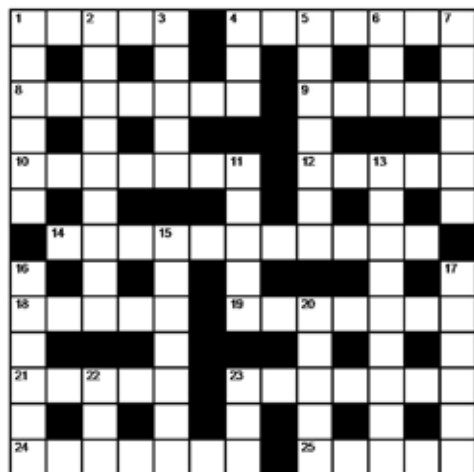
'Rev. Richard Coles' as the subject line

Closing date for entries is 31st December and the winner will be drawn at random and notified by email after this date.

About the Show:

Join Strictly's latest dancing star as he recounts his experiences both on the dance floor and backstage with the stars. Richard has a delightfully enquiring mind but with an eye finely tuned to absurdity. His voice will be familiar to Radio 4 listeners as he co-hosts Saturday Live, and is a contributor to Pause for Thought on the Radio 2 Chris Evans Breakfast Show. His face is also recognisable from plenty of panel shows like Have I Got News For You and QI, and as the co-host of BBC1's The Big Painting Challenge with Mariella Frostrup. In other reality TV news, he finished fifth on Celebrity MasterChef last year. In this ever popular evening, alongside his Strictly reminiscences, he'll tell a story that is as real as it is unlikely. He connects the euphoria and mayhem of being on Top of The Pops in the 80s to his present circumstances as Church of England priest, radio broadcaster and television show panellist, answering amongst many burning questions: "How do you go from pop star to priest? And why?"

crossword



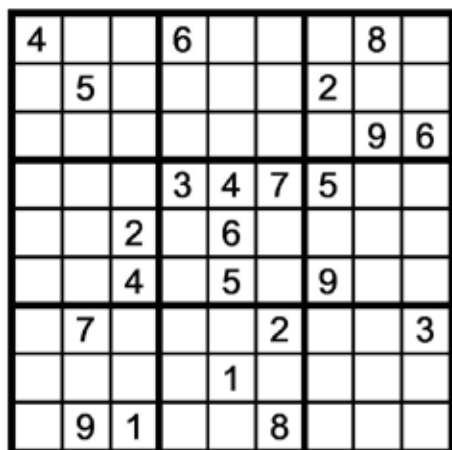
clues

Across

- 1 Melodious sounds (5)
- 4 Attain, accomplish (7)
- 8 Royal ruler (7)
- 9 Latin American dance (5)
- 10 Astonishing, impressive (7)
- 12 Large bird of prey (5)
- 14 Thrift store (7,4)
- 18 Officially register (5)
- 19 Delivers mail (7)
- 21 Occupation, vocation (5)
- 23 Faltering speech (7)
- 24 Discord, disunity (7)
- 25 The taste of toothpaste (5)

Down

- 1 Milk-producing animal (6)
- 2 Person lying outside to get a tan (9)
- 3 Royal dog (5)
- 4 Burnt remains (3)
- 5 Female party-giver (7)
- 6 Type of tree (3)
- 7 Rubbed-out, removed (6)
- 11 Rise from bed (3,2)
- 13 Male wedding attendants (9)
- 15 Soothe, assuage (7)
- 16 Thawed, defrosted (6)
- 17 Vitality, dynamism (6)
- 20 Large group of bees (5)
- 22 Donkey, burro (3)
- 23 Group of items (3)



how to play sudoku

It's simple!

Fill in the grid so that each row, column and 3x3 box, contains the numbers 1 through to 9 with no repetition. You don't need to be a genius. These puzzles use logic alone. Watch out! Sudoku is highly addictive.

answers on page 52

Accountants

41 Athos Business Solutions 0333 400 7876

Architects

7 Progression 01564 730191

Bathrooms

32 Kav's Bathrooms and Plumbing 07599 085670

Blinds / Curtains / Fabric

5 Tudor Rose Curtains 0121 445 2072
25 Grange Blinds 01564 702036

Car Services

16 Crossroads Service Station 01564 703225
55 Johnsons Cars 01564 454081
64 Easylease 0121 693 0573

Care Services

18 Lady Katherine Housing 01564 772850

Carpets

26 Ian Hounsell 01564 772324
27 Don Mander 01564 700 200

Central Heating / Gas Services / Boilers

25 Stephen Smith & Son 01564 200119

Cleaning Services

36 Bright & Beautiful 01564 339967
36 Classic Carpet Cleaning 0121 682 7450
37 Dorridge & Knowle Domestic Cleaning Services 07809 567264
37 Village Domestic Cleaning 07854 071892

Computer Services

14 Byte Support 0790 151 2544

Drives

21 Dimension Landscape & Driveways 0121 733 1463
29 Central Drives Landscapes 0121 702 1456

Events

5 Land Rover Sports & Social Club 0121 742 5490
8 Earlswood Garden & Landscape Centre 01564 702314
9 Hatton Adventure World 01926 843411

Fascias & Gutters

28 Proline 0800 956 1315

Fuel

17 Lapworth Fuel Supplies 07379 139492

Garden Centres / Services / Landscaping

20 Oakland Group - lights 0121 416 0408
21 Dimension Landscape & Driveways 0121 733 1463
29 Central Drives Landscapes 0121 702 1456
45 Kenilworth Fencing 07891 046187
46 Oakland Group 0700 598 2828
47 Hampton Gardening 01675 446174

Graphic Design

38 - 39 Hotlobster Design Ltd 0121 369 1977

Health & Beauty & Wellbeing

5 Central England Pilates 07762 311074
13 My Time Spa 07551 154446
14 Gaynor Kunneke Pilates 07729 712038
15 The Dentists Dorridge 01564 779868
15 The Cardio Shop 01564 792410
16 Equanimity CBT 0844 693 1282

Painter & Decorator

24 Bill Boyce 0121 744 0040

Plastering

28 Adkins Plastering 07977 354323

Plumbing

3 Knowle Domestic Appliance Repairs 01564 730183
25 Stephen Smith & Son 01564 200119
31 Cullen Plumbing & Tiling 07896 862916
32 Kav's Bathrooms and Plumbing 07599 085670

Restaurants

2 The Barn at Berryfields 01676 522155

Roofing

24 C Stevens Roofing 0121 733 1276

Sewing

14 Sew To It Sewing School 01564 792083

Solicitors

13 Sydney Mitchell 0121 746 3300
42 Wallace Robinson Morgan Solicitors 0121 705 7571
43 Probate Solicitors 01564 758055

Taxi Services

1 A2B Radio Cars 0121 733 3000

Windows & Doors

5 Windowfix 0121 704 1339
22-23 Mainstream 01564 320013
33 Howard Yarnold 0121 414 0808

4	2	9	6	7	3	1	8	5
1	5	6	9	8	4	2	3	7
3	8	7	1	2	5	4	9	6
9	6	8	3	4	7	5	2	1
5	1	2	8	6	9	3	7	4
7	3	4	2	5	1	9	6	8
8	7	5	4	9	2	6	1	3
2	4	3	7	1	6	8	5	9
6	9	1	5	3	8	7	4	2

Sudoku Solution
from page 51

M	U	S	I	C	A	C	H	I	E	V	E
A	U	O	S	O	L	R					
M	O	N	A	R	C	H	S	A	M	B	A
M	B	G					T				S
A	M	A	Z	I	N	G	E	A	G	L	E
L	T		E	S	R	D					
	C	H	A	R	I	T	Y	S	H	O	P
M	E	E	U				O	E			
E	N	R	O	L		P	O	S	T	M	A
L			I			W	S	E			
T	R	A	D	E		S	T	A	M	M	E
E	S	V	E	R	E	G					
D	I	S	S	E	N	T	M	I	N	T	Y

Crossword Solution
from page 51

useful numbers

Health

NHS non-emergency	111
Dorridge Surgery	01564 776262
Knowle Surgery	0121 796 2777
Solihull Hospital	0121 424 2000
Spire Parkway Hospital	0845 850 1451

Council

Solihull Council	0121 704 6000
------------------	---------------

Utilities

Electricity power cut	0800 6783 105
Gas leak	0800 111 9999
Severn Trent Water	024 7771 5000
Severn Trent Water (emergencies)	0800 783 4444

Travel

National Rail Enquiries	03457 48 49 50
Network West Midlands (buses)	0345 303 6760

LOCAL COUNCILLORS

DORRIDGE & HOCKLEY HEATH

Ian Courts

Tel: 01676 535490
 icourts@solihull.gov.uk

Andrew Mackiewicz

Tel: 01564 230294
 amackiewicz@solihull.gov.uk

Ken Meeson

Tel: 01564 777772
 kmeeson@solihull.gov.uk

KNOWLE

Diana Holl-Allen MBE

Tel: 01675 443112
 dhallen@solihull.gov.uk

Jeff Potts

Tel: 01564 774804
 jpotts@solihull.gov.uk

Alan Rebeiro

Tel: 01564 200047
 arebeiro@solihull.gov.uk

Councillor surgeries are held quarterly at Knowle Library, please contact the library (01564 775840) for the next date and if you wish to book a meeting with a local councillor.

local police contact for knowle & dorridge

Sergeant Mike Lloyd

Telephone: 101 ext 891 6011

Email: knowledorridge@west-midlands.ppn.police.uk



Pecan Pie

A Traditional American Favourite



Preparation time: 20 minutes + chilling time

Cooking time: 1 hour 15 minutes

Serves 8-10

Ingredients:

500g pack ready-made sweet shortcrust pastry
75g unsalted butter, softened
100g golden caster sugar
175g golden syrup
175g maple syrup
3 eggs, beaten
½ tsp vanilla extract
300g Pecan nuts halves
Double cream, or good quality ice cream to serve

Method

Lightly flour the work surface. Roll out the pastry and use to line a 23cm loose-bottomed tart tin. (Top tip - I always keep left over pastry in case I need to fill any cracks after

the blind baking!) Prick the pastry base with a fork then chill for 30 mins.

Heat oven to 190C/170C fan/gas 5. Line the chilled pastry case with greasproof paper, fill with ceramic baking beans and bake for 15-20 mins until the sides are set. Remove the beans and parchment and return to the oven for 5-10 mins until the base is set and the pastry is golden. Leave to cool.

Increase the oven temperature to 200C/190C fan/gas 6. Beat the butter and sugar together with an electric whisk until light and fluffy. While the beaters are still turning pour in both of the syrups. Gradually add the beaten eggs, ¼ tsp salt and the vanilla, and whisk until combined. Then stir through the nuts and pour all of the mixture into the tart case. Bake for 10 mins. Turn heat down to 160C/140C fan/gas 3 and continue baking for 30-35 mins – the pie should be golden brown but the filling should wobble a little in the centre when shaken. Leave to cool completely in the tin. Serve with cream or ice cream.

Johnsons Cars

Trusted, Quality Service

Johnsons Knowle should be your first stop when looking for a pre-owned vehicle.



Every vehicle we sell has been sourced from within the Johnsons Group and checked over by one of our trained technicians, so you can have faith in the quality of each and every one of our vehicles on the forecourt.

Alongside our showroom on Station Road we also have a state-of-the-art workshop, offering a comprehensive range of aftersales services, from MOTs to fixed-price servicing on all models.

For Sales, Service or Parts enquiries call us today on **01564 454 051**, or if you're passing pop in for a coffee and one of our friendly team will assist you.

Johnsons Cars

25 Station Road, Knowle, Solihull,
West Midlands B93 0HL

Call us today on **01564 454 051**
or visit us at johnsonscars.co.uk/knowle

Vehicles shown for illustration purposes only. Johnsons Dealerships LLP trading as Johnsons Cars (partnership No OC383295) is a subsidiary of Johnsons Cars Ltd, (registered in England No 3716766). Johnsons Dealerships LLP (Firm Reference Number: 512460), is an appointed representative of ITC compliance Ltd, which is authorised and regulated by the Financial Conduct Authority (their registration number is 313486).

Helping You Afford

Your Next Vehicle.

VOLVO V40



Special Offer £250.00 pm
Part Leather Bluetooth

AUDI Q3 S LINE TDI



Special Offer £365.00 pm
Bluetooth Audi Symphony Xenon

No Deposit! Inclusive of FREE Servicing and MOT's!

FORD TRANSIT TIPPER



Special Offer £240.00 pm
Electric Tipper Kill Switch

CITROEN BERLINGO



Special Offer £220.00 pm
Sat Nav Bluetooth

No Need to worry about CCJ's or Bad Credit!

Visit **www.easyleasecars.co.uk**

To Find Out How or Call Us Now on 0121 693 0573