

## Meet Jeff Sandbrook...

A local roofing specialist with **50** years experience  
and **15** years service at N. Bird & Son



Genuine Professional Roofers

All roofing work undertaken  
by Jeff and the team,  
except chimneys...  
that would be Jeff's Dad!

*"When replacing my roof, Jeff went above and beyond our expectations and he always behaved professionally and honest."* Alan Hawkins, via Trustatrader

- Ridge Tiles
- Lead Work
- Guttering
- New Roofs
- Flashings
- Chimneys
- Fascias
- Flat Roofs

**NO PAYMENT UNTIL YOU ARE 100% SATISFIED**

**N. BIRD & SON**

**ROOFING**

**0800 195 6946**  
**0121 695 9033**

EMERGENCY  
CALL OUTS

**FREE QUOTES**  
**FREE ADVICE**  
**FREE SURVEY**



Part of Quality Homes Investments Ltd



[www.thebarnatberryfields.co.uk](http://www.thebarnatberryfields.co.uk)

T: 01676 522 155

Berryfields Farm . Meriden . CV7 7LB

Serving Breakfast, Lunch & Dinner  
Monday to Saturday 10am - 11:30pm

Sunday 10am - 5pm

Traditional Roasts served on Sunday

Hire our new Function Room for special occasions,  
private dining & corporate events

Farm Shop & Award Winning Butchery

open 7 days a week

Mon - Fri 9am - 5:30pm

Sat 9am - 5pm

Sun 10am - 4pm



# ***Knowle Domestic Plumbing Service & Appliance Repairs***

## ***All Plumbing Work Undertaken***

- ***Burst pipes/leaks***
- ***Taps, Sinks, Waste Units***
- ***Ball Valves, Overflows***
- ***Tanks, Cylinders,  
Immersion***
- ***Toilets, baths,  
Showers***
- ***24 Hour Emergency***

## ***Appliance Repair Services***

- ***Washing Machines***
- ***Dishwashers***
- ***Tumble Dryers***
- ***Electric cookers***
- ***Vacuum Cleaners***

**£10 OFF for first time customers with this ad.**

*Valid until: 10th July 2018*

***12 month guarantee, same day call-out  
special rates for OAP's***

**Office: 01564 730183**

**Mobile: 07770 698196**



# joyous june!

## Welcome to the June issue of The Knowle & Dorridge Directory.

Hopefully it will be a joyous month for you all! As usual, there's a lot of great events happening in the area, but not everyone knows what's going on so check out page 6 where you'll find details of a ball, a Jazz Festival, a charity bike ride, a beauty evening and Solihull's first ever Land Rover Festival. There's also some great musical events coming up at the Core Theatre in Solihull including the Manfreds and The Barron Knights. It's great to support local businesses and charities – and have some fun in the process – so I hope you get out and about and take part in some of these great events.

Until next month,

*Zoe*

**Zoe Reece**

**Tel: 07557 220585**

**Email: [zoe@dorridgedirectory.com](mailto:zoe@dorridgedirectory.com)**

**[www.knowleanddorridgedirectory.com](http://www.knowleanddorridgedirectory.com)**



## contents



- |                                    |                                    |
|------------------------------------|------------------------------------|
| <b>6</b> Local events              | <b>59</b> Puzzles                  |
| <b>55</b> Competition              | <b>60</b> Index                    |
| <b>56</b> Book reviews             | <b>62</b> Cinema and theatre guide |
| <b>57</b> Useful telephone numbers |                                    |
| <b>58</b> Recipe                   |                                    |

**Locally designed by:** hotlobster design ltd **Printed by:** Warwick Printing Company

**PLEASE RECYCLE THIS MAGAZINE**



Quality British and German kitchens  
designed, built and delivered...*bringing your home to life*

Open Mon - Fri 10am to 5pm, Sat 10am - 4pm  
Ample parking

**FRANKE**  
**GRANITE**  
**WORKTOPS**

**NEFF**

**CORIAN**  
SOLID SURFACES

**SILESTONE**  
IN TORSLEYWOOD



**Miele**

**RANGEMASTER**

**KOHLER**

**SIEMENS**



**BOSCH**

**SCHOCK**

# community events



## Land Rover Fest

22nd – 24th June

**Solihull Town Centre**

Solihull's first ever festival of iconic Land Rovers will feature rare vintage cars, an enthusiasts' area for 4x4 fans, off-road driving experiences, an outdoor cinema and family entertainment, as well as street food and bars. The Festival is being held to celebrate Land Rover's 70th Jubilee and vehicle production in Solihull, where millions of the multi-award winning cars have rolled off the factory lines at the Lode Lane plant.

## Heart of England Bike Ride

Sunday 8th July

**Packwood House National Trust**

Knowle and Dorridge Lions bike ride from Packwood NT House. Gear up, get your friends and family together and enjoy a day in the Warwickshire countryside. Choose a 12 or 18 mile leisure ride, or a 50 mile sportive, teams welcome. Help raise funds for Headway, Breast Cancer Haven in Solihull and local causes. [www.knowleanddorridgejellions.com/bikeride](http://www.knowleanddorridgejellions.com/bikeride)

## Summer Hair and Beauty Evening at John Lewis

12th July 6pm – 8pm

### John Lewis Solihull, Beauty Department on First Floor

An evening of makeup and hair styling demonstrations, along with expert advice on summer skincare. The evening includes complimentary drinks and entry into a raffle to win a beauty hamper.



## Summer 'Out of Africa' Charity Ball

Friday 13th July 7pm – 11.30pm

**St Johns Hotel, Solihull**

An evening of delicious food and great entertainment awaits you at this black-tie fundraiser, this year with an 'Out of Africa' theme. Includes a three-course dinner, dancing

to a live band and other surprises during the evening. Tickets: £45 each, £400 for a table of 10. Proceeds split 50/50 between Age UK Solihull and Solihull Sustain. To book call 0121 704 7842 or email [events@ageuksolihull.org.uk](mailto:events@ageuksolihull.org.uk).

## Solihull Sort Of Jazz Festival

20th -22nd July

**Solihull Town Centre**

An open-air stage will be at the heart of the Solihull Festival with 9 free shows over the 3 days, accompanied by an international street food and drinks market. There's also have 15 venues housing some funky beats over the weekend. Look out for more details about bands in The Core Theatre, Revolution Bar, Yates, The White Swan, Sevenoaks Sound and Vision, John Lewis, Slug and Lettuce, The Crowne Plaza Solihull, O'Neill's, Ramada Solihull, Royal British Legion Solihull and the Masons Arms.

## KNOWLE LIBRARY

- **Jellybeans** – held monthly on a Thursday morning for story-time and rhymes for the under 5's 10.45am -11.30am
- **Monday Story Times** - Weekly story time and rhymes for toddlers and pre-school children 10.30am-11.00am
- **Under - fives** Rhyme Times at 2pm every Friday
- **Knowle Knit and Natter Group** – held monthly on a Tuesday 10.30am -11.30am
- **The Reading Café** – Monthly on a Friday morning 10.30am -11.30am
- **Self-Running Family History Group** – Monthly on a Tuesday 2.15pm -4.00pm
- **Reader's Circles** – Knowle Readers Circle meets monthly on a Friday 2.15pm
- **Knowle Library Self Running Readers Circle** monthly meeting Tuesday 11.00am -12pm
- **Poetry Group** - Monthly on a Tuesday 11.00am -12.00pm
- **Scrabble Club** - Adult Scrabble Club Fortnightly – Thursday 2.00pm



[www.progressionarchitects.com](http://www.progressionarchitects.com)

01564 730 191

[info@progressionarchitects.com](mailto:info@progressionarchitects.com)

Chartered Architects Gary Winn RIBA and Dean Poulton RIBA are Progression Architects and have been based in Solihull since 1992. They are about to celebrate 25 years in practice.

The practice specialises in the design of domestic house extensions, one off houses and conversions, although they also have some corporate blue chip clients.

They offer an initial free appraisal of your project, within the solihull area, where their wealth of experience can be offered to examine your initial ideas and work with you to progress your ideas into a design.



[www.progressiontownplanning.com](http://www.progressiontownplanning.com)

01564 730 191

[info@progressiontownplanning.com](mailto:info@progressiontownplanning.com)

At Progression we are also Chartered Town Planners and members of the Royal Town Planning Institute. We specialise in dealing with planning applications and negotiating with the Local Authorities. We also prepare, submit and attend Planning Appeals, where applications are refused, putting our case forward from an applicant's point of view.

As we are also Architects, we tend to think through our solutions creatively, at times from a perspective that is not immediately apparent. As Arboriculturists, we work together where tree issues meet planning issues, such as Tree Preservation Orders.

YOUR LOCAL, INDEPENDENT  
**ONE-STOP GARDEN SHOP**

**PAVING SUPERSTORE**

CONCRETE • SANDSTONE • LIMESTONE  
GRANITE • PORCELAIN • BLOCK PAVING  
WALLING • STEP STONES and much more...



Possibly the largest selection of paving & walling  
in the Midlands at the **most competitive prices!**

**Come and view our huge paving display and  
speak to our friendly team of experts.**

**TURF & TOPSOIL**



**STERLING PREMIUM GRADE TURF**  
Ideal for domestic lawns, sports pitches & general recreation

1Sq.M Roll from **£3.13**



**TOP-SPORT TOPSOIL**

A light, nutritious soil blended for use with turf

Bulk Bag (0.5cu.m) from **£39.80**

**MOONSTONE FLINT  
DECORATIVE AGGREGATES**

20mm hard angular chipping  
Ideal for driveways & paths



25kg  
**Polybag**  
from **£5.69**

0.5cu.m  
**Loose Tip**  
from **£65**

0.5cu.m  
**Bulk Bag**  
from **£75.05**

**POSSIBLY THE LARGEST  
PLANT CENTRE  
IN THE MIDLANDS!**



**WE MANUFACTURE.....**



FENCE PANELS



SHEDS



SUMMERHOUSES



TOOL STORES



BESPOKE BUILDINGS

**CUSTOM SIZES AND STYLES AVAILABLE TO ORDER. ASK FOR FURTHER DETAILS**

Pop in today to have a look around and stop for a drink and bite to eat at Wedges Cafe

**OPEN 7 DAYS - BUY ONLINE ANYTIME!**



# Stephen Smith & Son Plumbing & Heating Services

**WORCESTER**  
Boiler Group  
Accredited  
Installer



**iphe**  
Chartered Institute of  
Plumbing and Heating Engineering

Gas Safe reg no: 198187  
Natural Gas, LPG & Oil

**Which?**  
Trusted trader

**Tel: 0121 247 4957  
or 01564 200119**

**7 year manufacturer's  
warranty on all Worcester Greenstar  
gas boilers installed**

[www.stephensmithandson.co.uk](http://www.stephensmithandson.co.uk)

**"Family business. Local and reliable."**

## Work carried out includes:

- Boilers / Radiators
- Natural Gas - LPG and Oil Installation and Repair
- Bathroom Installations
- Landlord Gas Safety Inspections/Certificates
- Boiler Servicing
- Hot Water Cylinders (vented and unvented)
- System Powerflushing
- Cold Water Tanks
- Shower Installations / Repairs
- Pipework
- Underfloor Heating
- Solar Installations
- Renewable Energy

# COMPUTER PROBLEMS?



## CALL NOW FOR IMPARTIAL ADVICE FROM A QUALIFIED IT ENGINEER

- Virus & Spyware Removal
- Wireless Broadband Set Up / Repair
- All Computer Hardware Repair / Upgrades
- All E-Mail Issues
- One-to-One Friendly Training
- New Computers / Laptops
- New All In One Packages
- Many Other Services Available!

- ✓ QUALIFIED
- ✓ LOCAL
- ✓ INSURED
- ✓ NO CALL OUT FEE
- ✓ 100% GUARANTEE ON ALL HARDWARE
- ✓ DIRECT TO YOUR HOME OR OFFICE



## WE ARE BASED IN KNOWLE

Our business has been  
recommended by Which?  
Members on

**Which? Local**

**CONTACT MIKE NASH NOW...** Freephone: 0800 077 8301 Office: 01564 330 505

[helpme@ontrackcomputers.co.uk](mailto:helpme@ontrackcomputers.co.uk)

[www.ontrackcomputers.co.uk](http://www.ontrackcomputers.co.uk)

# CUCINA KITCHENS

Family run business  
with over 35 years' experience



Box Trees Art & Craft Centre  
Stratford Road  
Hockley Heath  
Solihull  
B94 6EA



01564 783007  
[www.cucina-kitchens.co.uk](http://www.cucina-kitchens.co.uk)





COMMUNITY  
CHAMPIONS  
SILVER  
AWARD

By



# Open Day

Wednesday 27th June  
10.00-11.30am

Meet our preschool staff,  
ask questions and find out  
more about our preschool

Sessions Mon-Thurs  
9.15am-12.15pm

2 & 3 year old funded spaces available

Now registering for September 2018

Scout and Guide HQ Shadowbrook Lane,  
Hampton-in-Arden, Solihull B92 0DQ

Tel: 07527 006386 Email: [hiapreschool@gmail.com](mailto:hiapreschool@gmail.com)



**QUALITY  
KITCHEN  
FACELIFTS**

**Transform your  
kitchen this summer**

**After**

**Est.  
1999**



**Before**



*why replace when  
you can reface?*

- UK's leading kitchen facelift expert
- Installed in 1-2 days by professionals
- Save £1000s with a makeover

**DREAM DOORS®**  
NEW LIFE FOR OLD KITCHENS

Proud members of  
**Checkatrade.com**  
Where reputation matters



**Call 0121 3140956**

**www.dreamdoors.co.uk**

**New Solihull showroom  
coming soon!**



# CROSSROADS SERVICE STATION LTD

A friendly, family-run business since 1969

- MOT Testing – Cars & Motorbikes
- Servicing & Repairs
- Air Conditioning Service & Repair
- Diagnostic Service & Repair
- Laser Wheel Alignment
- Tyres – Supplied & Fitted
- Qualified & Experienced Staff
- Courtesy Car or Collection/Delivery available

**OPEN 6 DAYS  
A WEEK**

MON – FRI 7.30am – 6pm  
Sat 7.30am – 1pm

**MOT's while you wait!**



**599-601 Tanworth Lane, Shirley, Solihull B90 4JE**

**Tel: 01564 703225**

**[www.crossroadservicestation.co.uk](http://www.crossroadservicestation.co.uk)**

VAT No.: 113213041

## PSYCHOLOGICAL THERAPY. PRIVATE HEALTH CARE.

**Equanimity CBT** provides Cognitive Behavioural Therapy (CBT) which is the therapy of choice in the NHS for common emotional, behavioural and mental health problems. It is also available privately and through health insurance. Corporate referrals are also accepted.

Work related stress? Anxiety? Depression? Low self esteem? Compulsive behaviours?  
OCD? Anger management? Emotion regulation difficulties? Adolescent behavioural  
problems? Aggressive driving? Panic attacks? Phobias? Emotional distress?

### Equanimity CBT

New Street, Kenilworth.  
Wassell Grove Lane, Hagley.  
Day and Evening Appointments Available

Contact: [enquiries@equanimitycbt.co.uk](mailto:enquiries@equanimitycbt.co.uk)  
Telephone 0844 693 1282 for a  
free 15 minute telephone consultation.

B.A.B.C.P. Accredited CBT Psychotherapist.

**Approved Health Care Provider for**  
AXA-PPP, Aviva, Pruhealth, CIGNA, Simply Health and WPA.



**[www.equanimitycbt.co.uk](http://www.equanimitycbt.co.uk)**

# Parents can persue their dreams too!



**So today I had a lovely client from overseas desperate for some coaching as she found herself in a very uncomfortable place, facing the business trip of a lifetime! "What if I fail?" She asked me, and then she paused..."Even more scary... What if I succeed?"**



Of course, years ago, before she had children, she said she was fearless and would knock on a million doors without fearing rejection but self-doubt

and guilt arrive as soon as baby number 1 it seemed for her and I know she is not alone.

Some women are wonderfully supported at home, as is my client, but still we manage to tell ourselves we can only chase our dreams at the expense of our children. When I asked her who would benefit from the trip other than herself and her clients, she was at a loss. "No one," she replied flatly. She felt selfish. I asked her if her own Mum had chased her dreams and she had not. I asked if she had felt more loved or that she had benefitted more from her own mother's choice to temper her enthusiasm for her profession. On the contrary, my client said she would have been so proud if her Mum had gone out of her way to achieve success, and that in her childhood she had never seen any female she knew achieve the goal of their dreams.

I asked her again who else would benefit from her going on the trip. Looking at it now from a new perspective, she saw that, as she would have been happy for her own Mum to be happier and more fulfilled, so would

her children. That, in fact her partner and their children would be proud of her and aspire to follow their own steps towards exciting life goals.

Realising that we all have a right to reach for our most exciting goals is liberating. Our children will always be our priority and we won't stop loving them because we are successful. We need to make time for our children a priority - 4000 children called Childline in 2016 because they were lonely. Our career must never come first, we need to take time to pull the children off their tablets to prise out any drop of information about their day. We should make the effort, regardless of teenage grumbings to encourage family meal times. We can be there for school plays and sports days, maybe not every single one but enough for our children to know we care.

My client is an amazing mother, and this will not stop if she is successful in getting a new contract. If anything her family will blossom with her, encouraged from time to time to step out of their comfort zone and face the prospect of failure and the hope of embracing success.

My client was so thrilled with the session, she gave me permission to share a tiny part of it with you. We worked on fear of failure and meeting deadlines amongst other things but my client had arrived feeling 3/10 happy about the prospect of her trip and left feeling a 6/10 happy! Not bad for an hour out of her day once the kids were tucked into bed!!

**If you too are feeling overwhelmed and could do with a coach to help you figure out a way forward, do please us call for a FREE consultation without obligation.**  
[www.guruyoucoach.com](http://www.guruyoucoach.com) 07930147799



Helping balance all the  
"little" extra demands in life!

Call for a FREE no obligation consultation

**07930 147799**

[www.guruyoucoach.com](http://www.guruyoucoach.com)  
[hello@guruyoucoach.com](mailto:hello@guruyoucoach.com)

*"Embarking on coaching  
with a little trepidation,  
I have been overwhelmed  
at the transformational  
impact GuruYou has  
had on my home and  
my professional life."  
J. Mitchell, Warwickshire.*



## WINDOW FIX of SOLIHULL

DOUBLE GLAZING REPAIRS & INSTALLATION

- Misted/Broken glass units
- UPVc-DoorLocks/Hinges/Handles
- Windows-Locks/Hinges/Handles
- Patio Door-Tracks/Wheels
- Conservatory Roof Replacement
- Replacement Fascia & Guttering
- REPLACEMENT WINDOWS  
& DOORS

**0121 704 1339**

[www.windowfixofsolihull.co.uk](http://www.windowfixofsolihull.co.uk)



## ByteSupport

Home and business IT support

**PC problems fixed.** Virus and  
malware removal. PC tune-ups.  
Data recovery. **New PC setup.**  
**Broadband,** email and server  
problems resolved. **Free advice.**

For a **professional, friendly**  
and **dependable** service

**Peter Johnston**  
**0790 151 2544**

[www.bytesupport.co.uk](http://www.bytesupport.co.uk)

No call-out fee.  
20yrs professional experience



**Land Rover Sports  
& Social Club**

### FORTHCOMING EVENTS

#### TYBER AND PETER FROM THE DUALERS 4th August 2018

Tyber and Peter are the lead singer  
and lead guitarist of The Dualers, a  
9-piece Jamaican Rhythm & Blues band.  
They have played alongside some of  
the finest names in Ska and Reggae  
including The Skatalites, Toots and The Maytals, Ziggy  
Marley, Jimmy Cliff, UB40 and Madness.

**Tickets online from [www.landroversc.co.uk](http://www.landroversc.co.uk)**



#### JOHN HOLT TRIBUTE 1st September 2018

Lee Alexander is a singer, song writer,  
and producer whose career spans many  
years with a wealth of experience under  
his belt. Choose from Reggae, Soul &  
Motown as he can tailor the set to suit. A fabulous  
all-rounder with bags of charisma.

**Tickets online from [www.landroversc.co.uk](http://www.landroversc.co.uk)**



CALL DURING OPENING HOURS TO PICK UP TICKETS FROM THE CLUB

Billsmore Green, Solihull, B92 9LN • 0121 742 5490

# BUILT WITH TRUST START TO FINISH

Your local family-run building company.



**BUILD . DECORATE . MAINTAIN**

Contact us, to see how we can help.

**0121 241 2959**

or visit us at: [www.parkfieldbs.co.uk](http://www.parkfieldbs.co.uk)

**Extensions. Conversions. New Builds.  
Renovations. Refurbishments.**

Windows & doors. Decorate, external & internal.  
Re-fit, bathrooms & kitchens. Roofing. Electrics.  
Plumbing. Heating. Carpentry. Tiling.  
Drives & patios. Architecture Design.  
Planning Applications. Interior Design.





## Curtains and Blinds

designed and made for especially you

*No job too big  
or too small*

call for a free  
no obligation  
quotation

"local  
interior designer"  
**Sarah J Harper**  
07518 851063



**Tudor Rose Curtains**

Mobile: 07518 851063  
answer machine: 0121 445 2072

sj@tudorrosecurtains.co.uk  
NEW WEB SITE  
www.tudorrosecurtains.co.uk



## There are many reasons to try Pilates



**Come and find out why  
Visit the website for faster sessions**

**Monday 10am Progressive**

**Monday 11am Beginners**

**Thursday 6.30pm Progressive +**

**Thursday 7.30pm Beginners**

**The Parish Centre Dorridge**

To find out more call 07762 311074

Visit [www.centralenglandpilates.co.uk](http://www.centralenglandpilates.co.uk)

16 years of Pilates expertise BSc Ba Hons

## Soft Options Mill Shop

Thousands of metres of fabric in stock plus hundreds of samples from all leading manufacturers.



Blinds, Poles & Tracks, Rufflette, Haberdashery and everything for the curtain maker.

Express making service available in our workrooms.

Family run business with over 60 years experience.

FREE measure & quote service.

Fitting service available.

Open  
7 days a week



# 01564 783399

Box Trees Craft Centre, Stratford Road  
Hockley Heath, Solihull B94 6EA

# FREE VALUATIONS

**DM&Co.**  
— SALES & LETTINGS —

## Since the start of the year we have achieved on average...

**5 OFFERS  
PER PROPERTY**

**SALE TIME  
OF 19 DAYS**

**99.2% OF  
SALE PRICE**

**DM&Co.**  
— SALES & LETTINGS —

**FOR SALE**  
**01564 777 314**  
[www.dmandcohomes.co.uk](http://www.dmandcohomes.co.uk)

**Call us NOW on 01564 777 314**

Dorridge Office -  
t: 01564 777 314 e: [sales@dmandcohomes.co.uk](mailto:sales@dmandcohomes.co.uk)

**Your straight talking ESTATE AGENT**

# Exceptional vision ...



Are you looking for a legal adviser that delivers wise and effective solutions?

**Look no further.**

Sydney Mitchell is a trusted Legal 500 law firm that will watch over your legal affairs.

We ensure that you receive quality legal advice.



“A professional service dealt with by delightful, helpful professionals..”

## Birmingham

T: 0121 698 2200 · F: 0121 200 1513  
DX 13054 Birmingham 1

## Shirley

T: 0121 746 3300 · F: 0121 745 7650  
DX 13856 Shirley 2

## Sheldon

T: 0121 700 1400 · F: 0121 722 3127  
DX 21801 Sheldon

Providing legal advice for generations

[www.sydneymitchell.co.uk](http://www.sydneymitchell.co.uk)





## Celebrating 10 years of caring for the elderly in Solihull



**Bright Dawn Home Care has been providing home care to adults and the elderly in the Solihull Borough, and the surrounding areas, for the past 10 years and is proudly celebrating this milestone this month. Tracy Ferreira, the Managing Director, started this home care business in 2008 after a personal experience of having to organise and provide care for her father.**

Starting out initially as part of an American Home Care franchise from offices in Hockley Heath, it became the private home care company Bright Dawn Home Care in 2015. Being independent allows Tracy to branch out into new areas of care such as live-in care, MS, Parkinson's Disease, Alzheimer's and Dementia and Stroke.

During the last 10 years Tracy is proud to have built a strong reputation in providing a good quality, consistent and person-centred care service to each of her clients.

She believes in the ethos of the company - that everyone deserves to be provided with a quality and dignified service, thus enabling people to maintain their independence, in their own homes, for as long as possible.

Bright Dawn Home Care is extremely proud of their dedicated staff, many of whom have been with the company since its inception in 2008. By supporting her staff in their careers Tracy has seen some care givers move up internally to senior and office staff and others have moved further to become mental health nurses and some are studying to become Doctors. Should you wish to find out more about Bright Dawn Home Care please visit our website.

**For more information please call 01564 784 598**  
**Or visit [www.brightdawnhomecare.co.uk](http://www.brightdawnhomecare.co.uk)**

**ALL CALLS ARE A MINIMUM OF AN HOUR LONG UP TO 24 HOURS.**  
**THIS IS TO ALLOW FOR A DIGNIFIED AND QUALITY BASED CALL EACH AND EVERY DAY.**

We provide services in: Catherine-de-Barnes, Hall Green, Hockley Heath, Hampton-in-Arden, Lapworth, Knowle, Marston Green, Olton, Shirley, Solihull, Tanworth-in-Arden, Balsall Common, Earlswood, Meriden and Berkswell.





# Quality care in your own home



Bluebird care (Solihull) is a privately owned local business operating only in the Solihull Metropolitan borough area, with offices in Shirley. Our main aim is to deliver high quality care to vulnerable people in their own homes, so that they can remain as independent as possible and remain in the familiar surroundings that they love. Our service is available 365 days per year and from a half hour to 24 hours per day. In addition all of our carers are trained in Dementia and Alzheimer's.

We provide personal care, for example, washing, bathing, toileting, dressing, getting into bed and getting up in the morning, administering medication. Bluebird care also provides home care such as help with ironing, cleaning, cooking, shopping etc. We can also provide companionship services for people, for instance reading to them, playing board games or taken to a show or a favourite venue.

Our personalised service is provided by very highly trained carers who are recruited locally. All of our carers are CRB checked and multi referenced to give you peace of mind. Our aim is to give you the same care staff so that they can get to know you as an individual and really know what matters to you.

PMJ House, Highlands Road, Shirley, Solihull, West Midlands B90 4ND  
**T: 0121 7117435 E: [solihull@bluebirdcare.co.uk](mailto:solihull@bluebirdcare.co.uk) [www.bluebirdcare.co.uk](http://www.bluebirdcare.co.uk)**

# Lady Katherine Housing & Care



The Court Of Lady Katherine Leveson

## ***Sheltered Housing***

(Live independently with the added value of support on site)

## ***Residential Care***

(Have your personal care needs met in a truly unique and vibrant Care Home)

## ***Respite Care***

(Come and have a short break with us or give your loved one a short holiday with us while you have a break)

## ***Enablement***

(Spend some quality time with us after a hospital stay, build up your strength for that return home)

### ***FOR FURTHER INFORMATION***

*contact*

Chris Mundell  
Fundraising & Marketing Officer  
01564 772415 / 01564 772850  
[cmundell@leveson.org.uk](mailto:cmundell@leveson.org.uk)

Temple Balsall, Knowle, Solihull, B93 0AN



# Helping Hands

Care and Nursing at Home

Est. 1989



## Do you need a Helping Hand?

If you are looking for an alternative to residential care or extra support for those everyday tasks that are becoming difficult for you or a loved one – then we're here to help in **Knowle & Dorridge** from **30 minutes per week** to **full-time live-in Care**.

Our care teams have been providing **award-winning quality** home care since 1989 and can help with: personal care, housekeeping, help getting around or even to provide a break to an existing family member or care-giver.

Looking for **care?**  
**01564 454 379**

For more information  
[www.helpinghands.co.uk](http://www.helpinghands.co.uk)



# O.T. Bathrooms

## THE WET ROOM SPECIALIST

# Buy online

- Bathroom Aids • Bath Seats
- Bath Lifts • Electric Showers • Bath Steps
- Shower & Bathing Accessories • Bathrooms Deltas
- Bathmaster Sonaris and more...

Go to [www.otbathrooms.co.uk](http://www.otbathrooms.co.uk)  
to see our full range of products

We are a trusted and reliable company supplying and fitting specialist bathrooms. We are here to help and advise accordingly, providing our customers with a bathroom that is safe, practical and stylish.

We welcome visitors to our showroom at 53 Warwick Road, Olton Hollow B92 7HS but if you are not local to Solihull, then we are only a phone call away. If you wish to speak to us please call on

**0121 707 8612**

Alternatively, get in touch with us via email at:  
[sales@othbathrooms.co.uk](mailto:sales@othbathrooms.co.uk)



**AWARD WINNER!**  
Small Business Award Winner



If you are unable to get to our showroom in Solihull we can visit you at no cost for a no obligation quote



# Dimension Landscape & Driveways

- Quality driveways, patios and garden landscaping
- Competitive prices and reliable service
- Using our own in-house expert contractors and equipment

Call us now for your free no obligation quote  
and to find out about our New Year Spring Bargains



**0121 733 1463 / 07799 428557**

**[www.dimensiondriveways.co.uk](http://www.dimensiondriveways.co.uk)**  
**[barney.dimension@icloud.com](mailto:barney.dimension@icloud.com)**

4200 Waterside Centre, Birmingham Business Park, Solihull Parkway, B37 7YN

Our products  
are so good  
they speak for  
themselves



## DOORS

We offer a wide range of door options including residential doors, french doors, patio doors, composite doors and bi-folding doors in Upvc and Aluminium.



## WINDOWS

Whether you want just one window replacing or a whole house, we can help. We offer advice on a range of designs to maximise the potential of your home, giving results you can enjoy for many years.



**WE MANUFACTURE  
OUR OWN UPVC AND  
ALUMINIUM PRODUCTS**

Telephone: **0121 772 5557**  
[www.davidcannonwindows.co.uk](http://www.davidcannonwindows.co.uk)



**ultraline®**

# ADRIAN LEWIS

PAINTER AND DECORATOR



With over 40 years' experience in painting and decorating, Adrian Lewis brings a wealth of professionalism and knowledge to your home or business.

Experienced in all finishes including wallpaper, internal and external paintwork, steel and floor painting, and varnishing.

Call: 07811 455 546

## D.A. MANDER & SON Ltd

### PROFESSIONAL FITTER AND SUPPLIER OF QUALITY CARPETS

*Don Mander does not have retail premises. If you need him please call him direct— the only way to buy carpets*

# 01564 700200



**EASIER** – Than walking round lots of shops  
**CHEAPER** – No overheads cutting costs  
**ACCURATE** – See colours in their true light  
**CONVENIENT** – View in the comfort of your own home

*We can uplift and remove existing carpets and move furniture*

**Mobile: 07976 778694**

**FREE ESTIMATES**

*91 Longdon Road, Knowle B93 9HT*

**See our Review's at  
Freeindex.co.uk**

**TO ADVERTISE  
HERE**

Contact Zoe Reece on 07557 220585 /  
zoe@dorridgedirectory.com

**Advertise**

# **C. STEVENS ROOFING**

**EST FAMILY BUSINESS**

NEW TILED ROOFS • GUTTERS  
FLAT ROOFS • BRICK WORK  
LEADWORK • SMALL REPAIRS  
UPVC FASCIAS • CHIMNEYS



KNOWLE

SOLIHULL

**01564 790008 0121 733 1276**

**WWW.CSTEVENSTOOFING.CO.UK**



# Bill Boyce Decorators

A family run business with over 30 years experience

- Painting & Decorating
- Internal / External
- Offices, Restaurants & Private Houses
- Reliable
- Excellent Reputation
- All work carried out to a high standard
- Free Estimates



Call Bill on 07976 810680 or Dan on 07966 275134

89 Union Road, Shirley, Solihull, B90 3BY  
 Tel: 0121 744 0040 or fax: 0121 744 0312  
 Email: billboycedecorators@hotmail.co.uk  
[www.billboycedecorators.com](http://www.billboycedecorators.com)

**FAMILY BUSINESS – ESTABLISHED FOR OVER 20 YEARS**

# ADKINS PLASTERERS

**SPECIALISTS IN:** Interior and Exterior Plastering

WALLS • CEILINGS • COVING • RENDERING  
 • DRYLINING AND WET PLASTERING

Reliable, friendly and clean service  
**All work guaranteed**

**For your free estimate just call us on**

07977 354323 / 07538 349991 / 0121 680 2248 or email: [AdkinsPlasterers@hotmail.co.uk](mailto:AdkinsPlasterers@hotmail.co.uk)



**10% OFF**  
all orders if you quote  
reference KDM.

# Mainstream

## Windows, Doors and Conservatories

Mainstream is a specialist manufacturer of high quality windows, doors & conservatories. We have a huge range of products including bifold doors, orangeries, glass extensions, pvc and upvc windows.



### Over 20 Years Experience

For over 20 years, our award-winning FENSA regulated firm has successfully manufactured and supplied windows, doors and conservatories to our clients.

### The Personal Touch

Our company is owned and run by three experienced directors that work in a 'hands-on' role. No job is too small or too large for us and if you are looking for something different, we can make bespoke products just for you.

### High Quality Standards

We pride ourselves on attention to detail, and all of our products are manufactured 'in-house' at our Head Office in the West Midlands. And the same goes for our fitters – they are our own trusted staff, with many years' experience between them.

**Come and see our new high performance  
Origin Aluminium Windows and doors.**

# 01564 320013

[www.mainstream-doubleglazing.co.uk](http://www.mainstream-doubleglazing.co.uk)

safechoice



1018/1020 Yardley Wood Road,  
Yardley Wood Birmingham B14 4BW  
Office Tel: 0121 430 9150

# A-door-able!

## UPVC & Bifold Doors to Suit All Applications

**Mainstream Windows is a leading supplier of all types of replacement domestic UPVC & Aluminium Bifold doors. Whether you are looking for a new front entrance, back entrance or garage options, Mainstream's expert team can advise you on the best product to suit your property, lifestyle and budget.**

For front entrance and back entrance, there are three main types of products used in homes today – wooden, UPVC and composite doors.

### UPVC Doors

UPVC doors are available in a wide range of colours and finishes and their comparative lower cost to alternative materials has made them popular in recent years. They also have other benefits, such as a higher resistance to weathering and generally require less maintenance



### Bifold doors

Bifold doors are built to stack neatly to one or both sides of an aperture when open. This allows people to move freely from inside to outside or from one room to another. These can be used as room dividers or to open onto a balcony or terrace.

### Composite Doors

As their name suggests, they are made up from several different materials to produce a robust, secure and attractive-looking to protect your home. The combination of materials, such as PVC, wood, insulating foam and GRP (glass reinforced plastic) results in a product that is very strong and requires no painting or varnishing to keep it looking good over its long lifetime. An occasional wipe with a damp cloth is all that is needed to keep it clean and retain its smart appearance.

### Porches



WALK | JOG  
RUN | RACE



BALSALL COMMON FUN RUN 2018

**BALSALL COMMON**  
**FUN RUN**  
WALK, JOG, RUN, RACE  
**5K & 10K**  
**SUNDAY**  
**23 SEPT.**

**TO ENTER AND FOR MORE INFORMATION, VISIT:**  
**LILYMAEFOUNDATION.ORG**



SIGNAGE SPONSOR

***Signarama***<sup>™</sup>

☎ 0121 742 5888



By Lucy Robson

# downsize your dish...

...and your dress size!

**S**maller plates may be a key to weight loss. Several years ago, a food psychologist called Brian Wasink gathered a group of 85 food and nutrition experts. He gave each of them a small bowl or a large bowl and a small scoop or a large scoop. Then he asked them all to serve themselves a 'portion' of ice cream. Now these were people who knew about nutrition, yet they scooped 31% more than the average serving size into the large bowl and 15% more from the large scoop.

Studies at the University of Pennsylvania

conducted similar experiments hypothesising that giving student subjects a smaller scoop would mean they would take more than one, but most of the students took only one scoop regardless of size.

So, what can those of us who want to shed a few pounds take from this? Swap your 10 inch / 25cm dinner plate for an 8 inch / 20 cm one and put fattening foods like gravy or salad dressings into small bowls with small spoons. Put salad stuff and vegetables in a big bowl with a large serving spoon and then tuck in.

Downsize with science!





## TARGETED LEAFLET PRINTING AND DISTRIBUTION

### Leaflet printing

5000 A5 colour double-sided leaflets for £135

5001 -10000 for £270

### Leaflet distribution

5300 leaflets for £150

**Delivered to 5300 homes in  
Knowle and Dorridge**

**Contact Zoe Reece on 07557 220585 /  
zoe@dorridgedirectory.com**



EXPERTS IN THE DESIGN,  
BUILD, INSTALL AND SERVICING  
OF FIRES AND FIREPLACES.



**BROUGHTON**  
FIREPLACES

**WOODGLOW**  
FIREPLACES

At Woodglow we make fireplaces to suit your requirements – any shape, any size, any style, any colour. We are an established family-run business that have been trading for over 20 years.

Come and visit us at our showroom in Olton Hollow and see what we could do for you.

**0121 707 2306**

59 Warwick Road, Olton, Solihull B92 7HS  
Open Monday to Saturday 10am – 5pm



# Cullen

Plumbing & Tiling

17 Whitacre Rd, Knowle  
cullenplumbingandtiling@gmail.com

**Tel: 07896 862 916**

***Established in 2005***

**City & Guilds**

**Qualified**

- Full bathroom and ensuite design and installation to the highest standards with complete project management from start to completion
- Kitchen Sinks and Taps, Dishwasher and Washing Machine Installation
- Central Heating & Radiators
- General Plumbing Maintenance & Repair
- Showroom Finish Wall & Floor Tiling for bathrooms, kitchens, hallways and conservatories
- Specialist in ceramic, porcelain, natural stone tiling
- Business built on recommendation and reputation

***All Work Guaranteed***

***Reliable Honest Service***

***References and Portfolio of Work Available***



**Call Alex Cullen  
NOW on 07896 862 916  
For a free no-obligation quotation**

# understanding travel insurance

**It can seem like just one more extra cost you could do without, but travel without it and you could be in trouble.**

**Crippling costs** - You risk footing a very large bill should you need healthcare or have your baggage lost or stolen. something as simple as a stomach bug in California with a stomach bug, which requires treatment and later flights home, could cost in the tens of thousands of pounds. A broken hip in a European destination could lead to a bill of £15,000

**Don't forget** - If you are planning any sports or other activities, mention it. Skiing and extreme sports are obvious examples, but scuba diving and other activities you may not think of as "extreme" may still need extra cover. Know how much it would cost to replace baggage, from suitcases to clothes, to jewellery, including wedding rings.

Why it matters where you're going - EU



countries tend to be less expensive while Canada, the US and the Caribbean are much more so due to the incredibly high cost of medical care in those regions.

**Declare pre-existing conditions** - certain medical conditions will add to the cost of your insurance, because insurance is about risk and certain ailments make it more likely that you might require medical attention. It may be worth looking at insurers which specialise in providing this type of insurance.

Tell them everything - Even if it feels like you are hiking up the cost of your insurance policy. You don't want your insurance to be invalid if you need to make a claim.

**Read!** - When you get your policy, make sure you read the full terms and conditions and the medical declaration carefully, so you understand exactly what you're covered for.







# Howard Yarnold Windows & Doors Ltd

Design, Build & Fit Aluminium & PVC-U  
Windows, Doors & Conservatories



New Bi-Folding Doors

Now available 'A' rated UPVC energy saving windows

Special offer on our Superb  
**Bi-Folding Concertina doors**  
any colour. Ideal for entrance  
from lounge to conservatory

- We can offer a style to suit any home.
- Advanced locking systems coupled with frames which are resistant to bending or the easy removal of glass make our windows less attractive to unwelcome visitors.
- Use of modern materials means our windows are virtually maintenance free, reduce noise pollution and provide thermal insulation in your home.
- Every frame is tailor made so fitting is a quick process with very little disruption to you.

FAMILY BUSINESS OFFERING HONESTY & PERSONAL SERVICE THROUGHOUT



Call Brian or  
Ashley on:



**0121 414 0808**  
e: [sales@howardyarnold.co.uk](mailto:sales@howardyarnold.co.uk)  
[www.howardyarnold.co.uk](http://www.howardyarnold.co.uk)

1 Birkdale Avenue, corner of Heeley Road, Selly Oak, Birmingham B29 6UB



# EH Smith KITCHENS & BATHROOMS

Now  
**open**  
until 2pm  
on Saturdays

Kitchens & bathrooms  
to suit any style & budget.

LAURA ASHLEY

**Roca**

MACKINTOSH®

Utopia



Expert advice • Site surveys • CAD design service

*Book your appointment today...*  
to see one of our showroom advisors.



Haslucks Green Road, Solihull  
Call 0121 713 7100



**Why not invest in a new driveway or patio to enhance the appearance and add value to your property?**

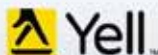
**Approved Drives and Landscapes offer a range of services to help improve all areas of your home, including;**

Clay & Block Paving - Tarmacing (red or black) -  
Patios - Brickwork - Slabbing - Gravel -  
Landscaping - Fencing - Property Repairs  
Roofing Repairs - Driveway Maintenance  
(Pressure cleaning & sealing - weed free)

**Proud member of**



**Find us in/on**



**[www.centraldrivewayslimited.com](http://www.centraldrivewayslimited.com)**

**Get in touch today for a FREE quotation**

**T: 0121 702 1456 M: 07748 577687**

**Michael.central@icloud.com**





Enjoy the outdoors,  
leave the indoors to us

Professional Housekeeping & Ironing Services

**BRIGHT & BEAUTIFUL**

A BEAUTIFULLY CLEAN HOME AND A BRIGHTER YOU



**FREE  
Basket of  
Ironing\***

*Bright & Beautiful know how difficult it can be to keep the outdoors from getting in during Winter! Muddy feet, paw prints and rain can take their toll.*

*That's where we can help. Bright & Beautiful is an affordable REGULAR, or ONE-OFF, housekeeping service that ensures your home sparkles all year round. In a bright and beautiful home everything is in its place, the laundry is done and the ironing is immaculate.*

*Make the most of the season and leave the CLEANING and HOUSEKEEPING to us...*

CALL TODAY FOR A FREE CONSULTATION

**01564 339 967**

[www.brightandbeautifulhome.com/henley-in-arden](http://www.brightandbeautifulhome.com/henley-in-arden)

**PLEASE QUOTE CODE: ADS**

\*UP TO 1 HOUR OF FREE IRONING, WHEN YOU SIGN UP FOR A REGULAR SERVICE.



## JUNE OFFERS

**Save 50% off all Carpet & Upholstery Cleaning.**  
Why not take advantage of our great offers:

	Normal	Discount
Lounge	£50	£25
Landing		
& Stairs	£50	£25
Bedroom	£32	£16
3 Piece Suite	£90	£45

## Classic Carpet Cleaning

For further information please contact

Telephone: 0121 682 7450 or Mobile: 07980 172963

[www.classiccarpetcleaners.co.uk](http://www.classiccarpetcleaners.co.uk)





Allow us to ease the pressure of keeping up with your domestic chores

## We are your extra pair of hands!

- Flexible cleaning service – ranging from one-off spring cleans to regular cleans with your own dedicated lady.
- More than just a cleaning business – let us help with ironing, shopping, in fact most household tasks. The list is endless .... Just ask!
- Our team have many years experience and have been carefully vetted and interviewed in their own homes.
- We are proud of the standards our team work to and all ladies have an excellent reputation within the local area.



We have full  
comprehensive  
public &  
employers  
liability  
insurance

Please give me a call to chat through your requirements.

**Call Lorna on 0785 4071892**

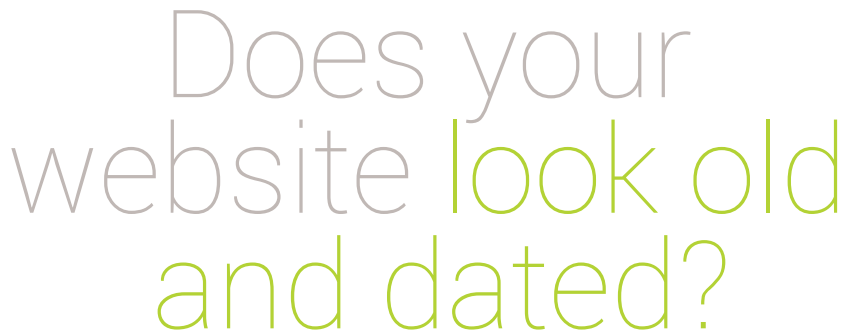
villagedomestic@gmail.com

# Dorridge & Knowle Domestic Cleaning Services

- Small established cleaning and domestic help business
- Provide dedicated, friendly & trustworthy local ladies (CRB checked)
- Take pride in high standards and caring for customers' homes
- Regular service or one off spring cleans
- Ironing service available
- References available
- Comprehensive insurance
- Costs are not subject to VAT



For a FREE, no obligation quote,  
please call Sue on 07809 567264



Hotlobster Design offers you up-to-date websites to replace your tired ones.

Bespoke content managed websites are cheaper than you think.  
Call now for a chat about your website, social media & marketing needs.



[studio@hotlobster.uk.com](mailto:studio@hotlobster.uk.com)

**T: 0121 369 1977**

[www.hotlobster.uk.com](http://www.hotlobster.uk.com)

# Johnsons Cars

Trusted, Quality Service

**Johnsons Knowle should be your first stop when looking for a pre-owned vehicle.**



Every vehicle we sell has been sourced from within the Johnsons Group and checked over by one of our trained technicians, so you can have faith in the quality of each and every one of our vehicles on the forecourt.

Alongside our showroom on Station Road we also have a state-of-the-art workshop, offering a comprehensive range of aftersales services, from MOTs to fixed-price servicing on all models.

For Sales, Service or Parts enquiries call us today on **01564 454 051**, or if you're passing pop in for a coffee and one of our friendly team will assist you.

## Johnsons Cars

25 Station Road, Knowle, Solihull,  
West Midlands B93 0HL

Call us today on **01564 454 051**  
or visit us at [johnsonscars.co.uk/knowle](http://johnsonscars.co.uk/knowle)

Vehicles shown for illustration purposes only. Johnsons Dealerships LLP trading as Johnsons Cars (partnership No OC383295) is a subsidiary of Johnsons Cars Ltd, (registered in England No 3716766). Johnsons Dealerships LLP (Firm Reference Number: 512460), is an appointed representative of ITC compliance Ltd, which is authorised and regulated by the Financial Conduct Authority (their registration number is 313486).



Helping You Afford

Your Next Vehicle.

**VAUXHALL MOKKA 1.6CDTI**



**Special Offer £235.00 pm**

**Bluetooth USB Low Mileage**

**FORD ECOSPORT**



**Special Offer £235.00 pm**

**Bluetooth Sat Nav USB**

**No Deposit! Inclusive of FREE Servicing and MOT's!**

**MERCEDES-BENZ CITAN**



**Special Offer £230.00 pm**

**Exclusiv Model Bluetooth USB**

**FORD**



**Special Offer £235.00 pm**

**Low Mileage USB Bluetooth**

**No Need to worry about CCJ's or Bad Credit!**

Visit **www.easyleasecars.co.uk**

To Find Out How or Call Us Now on 0121 693 0573



# legal services from specialist business solicitors

[wallacerobinson.co.uk](http://wallacerobinson.co.uk)   [enquiries@wallacerobinson.co.uk](mailto:enquiries@wallacerobinson.co.uk)

We aim to get to know and understand your business to ensure our advice is bespoke to your requirements, dealing with all your business related legal matters, including:

COMMERCIAL PROPERTY  
COMPANY AND COMMERCIAL LAW  
DISPUTE RESOLUTION • EMPLOYMENT LAW  
LANDLORD AND TENANT LAW  
HEALTH SECTOR

Wallace  
Robinson  
& Morgan  
SOLICITORS

since 1855

Take the first step to resolving your legal issues by  
contacting us on 0121 705 7571

#### Solihull

4 Drury Lane, Solihull  
West Midlands  
B91 3BD  
t 0121 705 7571

#### Dorridge

17-19 Station Approach,  
Dorridge, West Midlands  
B93 8JA  
t 01564 779393

# give blood!

## World Blood Donor Day is June 14th

**M**ost of us have had or know someone who has had a blood transfusion. Blood donation is vital to help treat thousands of seriously ill patients every day and new

donors are desperately needed. Currently only 4% of the eligible population are active blood donors.

Here are 10 reasons to consider giving blood:

**Life-saver** - You change lives each time you give blood. Every blood donation can save or improve the lives of up to three adults or six children.

**Desperate need** - NHS Blood and Transplant needs many more donors to come forward to make sure the nation's blood stocks remain at a safe level for the future.

**Day-to-day needs** - You may think blood is only used for massive blood loss in A&E patients, but your blood could help many different people. Donated blood is also used for patients having surgery, maternity emergencies, and for people with cancer or blood disorders.

6000 donations are needed per DAY! - It's true that changes in medical practices mean demand for donated blood has reduced. But hospitals across England and North Wales still need around 6,000 blood donations every day to treat patients.

**A quick pint** - If you book an appointment, the whole process takes less than an hour. One hour, every three to six months. Just a short amount of time to do something wonderful for another human being.

**You're probably eligible** - You need to be in general good health and weigh over 50kg to donate blood. If you are looking to donate for the first time you need to start on or before your 66th birthday. To check if you are eligible go to [www.blood.co.uk](http://www.blood.co.uk)

**You might be a missing type** - Blood from



all groups is needed but some blood groups are particularly vulnerable to shortfall such as O negative – which can be given to all patients in an emergency: think of those episodes of Casualty or ER where the doctor in charge yells 'Where's the O-NEG'!

**You might be young** - We need more young donors. Around half of current donors are aged over 45. The more young people get involved the better future blood stocks will be safeguarded. You can start donating at 17.

**You might be BAME** - Are you black, Asian or from an ethnic minority? Please consider becoming a donor as some rare blood types are more common among these communities. Conditions such as sickle cell and thalassemia are also more likely to affect these groups and patients require regular blood transfusions, ideally from donors from a similar ethnic background.

**There are biscuits** - Free food! Around 6 million biscuits are eaten by donors every year. Aren't we a greedy bunch? But the post donation biscuit and cuppa are important because sitting quietly while eating and drinking something helps the body to recover.

**If I've inspired you to become a donor go to [www.blood.co.uk](http://www.blood.co.uk) or call 0300 123 23 23**

# Athos

solutions for the future...

**BUSINESS SOLUTIONS**

Chartered Certified Accountants



*Athos has built up a professional team that goes the 'extra mile' as a matter of due course. This has been invaluable to our business and has greatly assisted us.*

**Roger Green, Director  
Menswear Company**

- Accounts
- Tax Returns
- Payroll and Auto Enrolment
- Bookkeeping and VAT Returns
- Tax Advice
- Management Accounts



*Call and make an appointment for a free initial consultation where a bespoke fixed fee quotation will be provided.*

**T. 0333 400 7876**

Athos Business Solutions Limited  
1623 Warwick Road, Knowle, Solihull, West Midlands B93 9LF  
[www.athos.uk.com](http://www.athos.uk.com)

[enquiries@athos.uk.com](mailto:enquiries@athos.uk.com)





# Specialist Advice



Wills & Trusts  
Lasting Powers of Attorney  
Probate & Estate Planning  
Inheritance Tax Issues  
Asset Protection



For more information or a no  
obligation chat call us on:

**01564 758055**

[www.probate-solicitors.co.uk](http://www.probate-solicitors.co.uk)

Richard Arney  
Solicitor, TEP

Caroline Wilden  
Solicitor, TEP

1705 High Street,  
Knowle, Solihull B93 0LN

# totally tropical

The 'greenhouse effect' is an environmental hot topic.

And it's true that despite the grim winter of 2017-18 we've generally been experiencing milder conditions in recent years. I've certainly started to experiment with more exotic plants. It's a little risky; one hard winter can wipe out a tender specimen. But between now and September there's every chance that many tropical plants will survive if planted out in our gardens. They need a sunny sheltered spot, like the one you would choose for petunias, tobacco plants and rose beds.

Try Cannas. They have luxuriant broad spear-shaped leaves, which can be deep green, purple or even striped with orange or yellow. They produce vibrant flowers which look like gladioli but better!

Or how about planting scarlet dahlias like 'Bishop of Llandaff', which also sports attractive bronze foliage.

A big clump of African marigolds provides a blaze of fiery colour. Or try tender perennial salvias in colours which range from magenta through to scarlet and deep purples and blues. They won't survive the first winter frosts but they are easy to propagate

from shoot-cuttings which can be over-wintered in a cool greenhouse ready for the following spring.

Verbena bonariensis produces tall wands of dainty lilac flowers. They self-seed freely, which is great if you consider that a bonus in a plant (I do) but maybe avoid this one if self-seeding bothers you.

You could even try a banana plant. The variety "Musa Banjo" is wonderfully architectural, and though it does not produce fruit it will create impact. Plant in a large pot and let its fan-like leaves create fabulous shadows on the patio. It hails from Japan originally and loves sunshine, but it is hardy to -6C so perfect for the suburban UK climate. Do note that in winter the leaves naturally die back and turn brown. I thought I'd killed mine the first year, but the leaves grow back quickly in the spring.

The Honey Bush (Melianthus major) is a terrific half-hardy foliage specimen





with its 50cm long grey-green deeply serrated leaves, which look as though they've been cut with pinking shears.

Some of these plants will survive a British Winter with protection but it's probably best to treat your 'tropical' border as a temporary display.

Experiment and have fun creating your very own suburban rainforest.

**Happy Gardening!**

**Amazingly green for Surprisingly little!**

Achieving an amazing Deep Green Lawn that will be the envy of all your friends and neighbours is surprisingly exceptional value.

We offer a full range of lawn treatments including, moss control, fertilisation, weed control, scarification and aeration.

For your free lawn survey:  
 Call - 07766077341  
 Email - [info@deepgreenlawns.co.uk](mailto:info@deepgreenlawns.co.uk)  
 Or visit our website, [www.deepgreenlawns.co.uk](http://www.deepgreenlawns.co.uk)

**We are a family-run business offering a professional, friendly and reliable solution to all of your landscaping & fencing needs.**



We're based in Kenilworth but work all over Warwickshire and the West Midlands.



**07852 713240 /07891 046187**  
**01926 741835**  
[kenilworthfencing@gmail.com](mailto:kenilworthfencing@gmail.com)



# Oakland Group

[www.oaklandgroupuk.com](http://www.oaklandgroupuk.com)



## Complete Outdoor Services & Lighting



**Tree Surgery  
& Hedging**



**Borders, Turfing & Outdoor  
Maintenance**



**Outdoor & Garden  
Lighting**



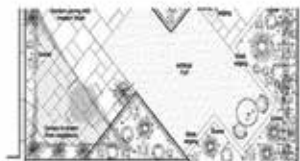
**Fencing**



**Lawns & Mowing Services**



**Landscaping**



**Garden  
Design**



**Planting  
& Irrigation Work**



**Groundworks & Land Drainage**



**Commercial Works**



**Customer Feedback**



**Emergency Works**

**"Oakland have to be one of the most proactive businesses we have the pleasure to work with... I would highly recommend them to anybody who requires dependable service."**

*Gillian Cain, Audi Birmingham, 31 July 2017*



**01564 758608**  
**[info@oakland-group.co.uk](mailto:info@oakland-group.co.uk)**



# **Hampton**

**Gardening & Landscapes Ltd**

**Patios & Landscaping**  
**Fencing**  
**Lawn Mowing**  
**Hedges & Trees**



**Office: 01675 446 174 Mobile: 07827 613 168**  
**[www.hamptongardening.co.uk](http://www.hamptongardening.co.uk)**

## Midland Grounds Machinery



Get your garden ready for Summer

with our range of lawnmowers, blowers, garden shredders and scarifiers



**SALES / SERVICE / PARTS**

Come and see our new extended showroom at:

**18 Station Road, Knowle, Solihull B93 0HT**

**01564 773614** | [www.mgmsolihull.co.uk](http://www.mgmsolihull.co.uk) | [dave@mgmsolihull.co.uk](mailto:dave@mgmsolihull.co.uk)

## PRO LINE

PROFESSIONAL LINE UK LTD

**REPLACEMENT PVCu FASCIAS & GUTTERS**

**IT'S THE ONLY PROPER WAY**

Don't be fooled by cheap prices! Capping over existing Fascias will ruin your home! It causes sweating, will rot away your old boards and eventually put dry rot through your roofing timbers.

Don't be fooled by those who say they cut rotten wood first, and then cap over.  
**OLD WOOD WILL ROT, NO MATTER WHAT!**

**CALL NOW FOR OUR JUNE & JULY DEALS**

**We promise to beat any genuine quote!**

**TEL: 0121 314 4390 MOBILE: 07776 287035**

I will call, survey and explain exactly what the installation entails, with no obligation on your part. We would however be pleased to quote you for any additional areas. If you have had new Gutters & Down Pipes in the last ten years, it is possible to refit them afterwards.

Central Boulevard, Blythe Valley Business Park, West Midlands, B90 8AG

We also install Windows, Conservatories, Porches, Cavity Wall Insulation, Felt & Flat Roofs



# COMPETITION



## WIN 2 tickets

**to see Morgan & West's Magic Show  
(for kids and childish grownups!)**

**Thursday 30th August 2pm**

**The Core Theatre, Solihull (formerly Solihull Arts Complex)**

For your chance to win these tickets, worth £20, visit the Core Theatre website page for this event - [www.thecoretheatresolihull.co.uk](http://www.thecoretheatresolihull.co.uk) - to find the answer to this question:

**With which TV show did Little Mix spring to fame on?**

Email your answer to: [thecoretheatre@solihull.gov.uk](mailto:thecoretheatre@solihull.gov.uk) – and please put  
'Morgan & West' as the subject line

**Closing date for entries is 15th July and the winner will be drawn at  
random and notified by email after this date.**

### **About the Show:**

Time travelling magicians Morgan & West present a jaw dropping, heart stopping, brain busting, opinion adjusting, death defying, mind frying, spirit lifting, paradigm shifting, outlook changing, furniture rearranging magic extravaganza! Morgan & West competed to be the Next Great Magician (ITV1) and attempted to escape The Slammer (CBBC). Witness a mountain of mysterious magic, a hatful of hyper-reality, and of course a truck full of tricks and tea. Mixing brain boggling illusion and good old fashioned tom-foolery, Morgan & West present a show for all the family, where magic and silliness abound! Fun for ages five to 105!

# a good read

reviews By Willow Coby

## Interview with the Vampire

by Anne Rice

Most people are familiar with the vampire myth as originally written by Bram Stoker in the 19th century. A blood thirsty monster whose sole aim is to kill, and perhaps transform his victims into vampires. For 70 years this was pretty much how vampires were perceived, until Anne Rice published her seminal gothic novel in 1976. Daniel, a young reporter is approached by a mysterious man who offers to tell him his life story. The man is in his 20s and yet seems melancholy beyond his years. And Daniel soon learns why, as the man – Louis – tells a story that begins in the year 1791 in New Orleans. Devastated by the death of his brother, Louis gives up on life and at this low point he meets an enigmatic young man named Lestat – who turns out to be a vampire seeking a companion. With his permission he turns Louis into a vampire and the two embark on a lonely life moving from city to city and continent to continent under the cover of darkness. Known for her gothic style, it is Rice's love of her hometown of New Orleans that comes through in this wonderfully evocative novel. Her descriptions bring the city to life and she gives her vampires a voice that speaks of the agony of eternity. This hugely influential work has shaped the genre ever since.



## Girl Underground

by Morris Gleitzman

Bridget is an 11-year-old girl who is about to start at a new school. Not just any school, but one of Australia's top private boarding schools. All she wants is to stay anonymous in the hope that no one will find out about her family. You see, Bridget isn't like the other pupils, and her family is not what you'd expect. Her dad does a roaring trade in dodgy Russian blenders and smuggling goods out of Turkmenistan, whilst her brother is in prison for robbery. Yes, Bridget is worried she will say the wrong thing and give herself away. So, when her new friend, Menzies, asks her to help him she is worried that people might start asking questions. Especially when it turns out that it involves breaking into the Australian government to try and see the Prime Minister! This hugely entertaining novel from Gleitzman deals with the serious issue of refugees in Australia, and debates the rights and wrongs of keeping them in detention centres as illegal immigrants. The reader will identify with the views of both Bridget and Menzies who cannot see the fairness in keeping children 'behind bars' when all they have done is escape from their homeland in fear for their lives. This is one to spark discussion!





# useful numbers

## Health

NHS non-emergency	111
Dorridge Surgery	01564 776262
Knowle Surgery	0121 796 2777
Solihull Hospital	0121 424 2000
Spire Parkway Hospital	0845 850 1451

## Council

Solihull Council	0121 704 6000
------------------	---------------

## Utilities

Electricity power cut	0800 6783 105
Gas leak	0800 111 9999
Severn Trent Water	024 7771 5000
Severn Trent Water (emergencies)	0800 783 4444

## Travel

National Rail Enquiries	03457 48 49 50
Network West Midlands (buses)	0345 303 6760

## LOCAL COUNCILLORS

### DORRIDGE & HOCKLEY HEATH

#### Ian Courts

Tel: 01676 535490  
 icourts@solihull.gov.uk

#### Andrew Mackiewicz

Tel: 01564 230294  
 amackiewicz@solihull.gov.uk

#### Ken Meeson

Tel: 01564 777772  
 kmeeson@solihull.gov.uk

### KNOWLE

#### Diana Holl-Allen MBE

Tel: 01675 443112  
 dhallen@solihull.gov.uk

#### Jeff Potts

Tel: 01564 774804  
 jpotts@solihull.gov.uk

#### Alan Rebeiro

Tel: 01564 200047  
 arebeiro@solihull.gov.uk

## local police contact for knowle & dorridge

Sergeant Mike Lloyd

Telephone: 101 ext 892 6037

Email: rural@west-midlands.pnn.police.uk



# Green Gooseberry Jam

This wonderfully tart jam goes well with scones and cream or creme fraiche and makes a lovely filling for Victoria sandwich cakes.



**Makes: 2 jars (approximately)**  
**Preparation and cooking**  
**time: 1 hour**

**A cooking thermometer is necessary for this recipe. Also jam jars and a saucer. The saucer should be placed in the freezer to keep it cold.**

## Ingredients

900g Slightly under-ripe gooseberries,  
topped and tailed  
900g-1 kg Granulated sugar  
600ml water

## Method

First wash your jam jars in hot soapy water, then rinse well. Put them into a preheated oven at 160°C/gas 3 until you are ready to use them.

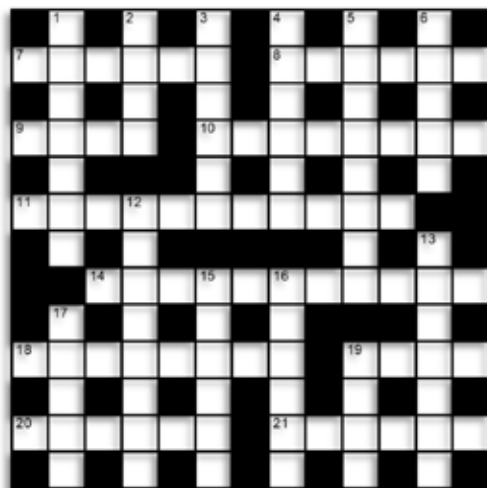
Put the fruit and water only into a large, heavy-based saucepan. Bring to the boil, then simmer gently until the skins are soft. If you add the sugar the skins will not soften.

Add the sugar and stir over a low heat until it has dissolved completely. Don't boil the jam before the sugar has dissolved or it may crystallise during storage. Once the sugar has dissolved bring the jam to a rapid but steady boil and boil until it reaches a temperature of between 105°C and 110°C.

After about 15 minutes your jam should have become more viscous and clear and you will need to see whether setting point has been reached. This is called the 'wrinkle test'. Remove the saucer from the freezer. Take the pan off the heat, spoon a little jam onto the plate and leave until completely cold. Then push it across the plate with your forefinger. It should wrinkle up if it's ready. If it only wrinkles slightly, pop the saucer back in the freezer and bring the jam back to the boil and boil for a few more minutes.

Skim any scum from the top of the jam and pour it into the prepared jars. Cover the surface of the jam with waxed discs, wax-side down, and either quickly cover each jar with a dampened round of cellophane and rubber band or leave to go cold before covering with cellophane or a screw-top lid. Sealing the jars well prevents the build-up of condensation under the lid, which could lead to mould.

## crossword



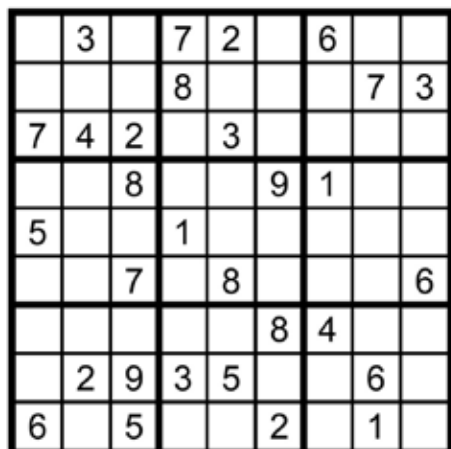
## clues

### Across

- 7 Important Hindu God (6)
- 8 Latin name for the onion family (6)
- 9 Sudden dull sound (4)
- 10 Anywhere, all over (8)
- 11 State of havoc or catastrophe (11)
- 14 Club, guild or union (11)
- 18 Athletic, strapping (8)
- 19 Spirit, energy (4)
- 20 Homing bird (6)
- 21 Character, disposition (6)

### Down

- 1 Bleach (7)
- 2 Cast, discard (4)
- 3 Get the better of (6)
- 4 Skill, flair (6)
- 5 19th Century US soldier (8)
- 6 Female monarch (5)
- 12 Replied (8)
- 13 Console (7)
- 15 Antagonise, provoke (6)
- 16 Land surrounded by water (6)
- 17 Red-breasted bird (5)
- 19 Medieval stringed instrument (4)



## how to play sudoku

### It's simple!

Fill in the grid so that each row, column and 3x3 box, contains the numbers 1 through to 9 with no repetition. You don't need to be a genius. These puzzles use logic alone. Watch out! Sudoku is highly addictive.

answers on page 60

## Accountants

48 Athos Business Solutions 0333 400 7876

## Architects

7 Progression 01564 730191

## Bathrooms

24 OT Bathrooms 0121 707 8612  
38 EH Smith 0121 713 7200

## Blinds / Curtains / Fabric

17 Tudor Rose Curtains 0121 445 2072  
17 Soft Options Mill Shop 01564 783399

## Builders

16 Parkfield Building Services 0121 241 2959

## Car Services

13 Crossroads Service Station 01564 703225  
44 Johnsons Cars 01564 454 51  
45 Easylease 0121 693 0573

## Childcare and Care Services

11 Hampton-in-Arden Pre-school 07527 006386  
20 Bright Dawn Home Care 01564 784598  
21 Bluebird Care 0121 711 7435  
22 Lady Katherine Housing 01564 772850  
23 Helping Hands Home Care 01564 455 277

## Carpets

27 Don Mander 01564 700 200

## Central Heating / Gas Services / Boilers

9 Stephen Smith & Son 01564 200119

## Cleaning Services

40 Bright & Beautiful Classic Carpet Cleaning 01564 339967  
41 Dorridge & Knowle Domestic Cleaning Services 0121 682 7450  
41 Village Domestic Cleaning 07809 567264  
07854 071892

## Computer Services

9 On Track Computers 0800 077 8301  
15 Byte Support 0790 151 2544

## Drives

25 Dimension Landscape & Driveways 0121 733 1463  
39 Central Drives Landscapes 0121 702 1456

## Estate Agents

18 DM & Co 01564 777314

## Events

15 Land Rover Sports & Social Club 0121 742 5490

## Fascias & Gutters

54 Proline 0800 956 1315

## Fireplaces

34 Broughton & Woodglow Fireplaces 0121 707 2306

## Garden Centres / Services / Landscaping

8 Earlswood Garden & Landscape Centre 01564 702314  
25 Dimension Landscape & Driveways 0121 733 1463  
39 Central Drives Landscapes 0121 702 1456  
51 Kenilworth Fencing 07891 046187  
51 Deep Green Lawns 07766 077341  
52 Oakland Group 0700 598 2828  
53 Hampton Gardening 01675 446174  
54 Midlands Grounds Machinery 01564 773614

## Graphic Design

42-43 Hotlobster Design Ltd 0121 369 1977

## Health & Beauty & Wellbeing

13 Equanimity CBT 0844 693 1282  
15 Guru You 07930 147799  
17 Central England Pilates 07762 311074

## Kitchens

5 No. Thirty One 01564 770587  
12 Dream Doors 0121 314 0956  
10 Cucina 01564 783007  
38 EH Smith 0121 713 7200

## Memorials

63 Yardley Memorials 0121 706 2473

## Online Buying & Selling

64 ebuygumm www.ebuygumm.co.uk

## Painter & Decorator

27 Adrian Lewis 07811 455546  
29 Bill Boyce 0121 744 0040

## Plastering

29 Adkins Plastering 07977 354323

## Plumbing

3 Knowle Domestic Appliance Repairs 01564 730183  
9 Stephen Smith & Son 01564 200119  
35 Cullen Plumbing & Tiling 07896 862916

## Restaurants

2 The Barn at Berryfields 01676 522155

## Roofing

1 N Bird & Son 0800 195 6946  
28 C Stevens Roofing 0121 733 1276

## Solicitors

19 Sydney Mitchell 0121 746 3300  
46 Wallace Robinson 0121 705 7571  
49 Probate 01564 758055

## Windows & Doors

15 Windowfix 0121 704 1339  
26 David Cannon Windows 0121 772 5557  
30-31 Mainstream 01564 320013  
37 Howard Yarnold 0121 414 0808

8	3	1	7	2	5	6	9	4
9	5	6	8	1	4	2	7	3
7	4	2	9	3	6	5	8	1
3	6	8	2	4	9	1	5	7
5	9	4	1	6	7	8	3	2
2	1	7	5	8	3	9	4	6
1	7	3	6	9	8	4	2	5
4	2	9	3	5	1	7	6	8
6	8	5	4	7	2	3	1	9

**Sudoku Solution**  
from page 59

L	S	O	T	B	O
V	I	S	H	N	U
G	E	T	L	U	E
T	H	U	D	W	H
T	I	N	C	N	
D	E	V	A	S	T
N	N	A	C		
A	S	S	O	C	I
R	W	F	S	M	
P	O	W	E	R	F
B	R	E	A	U	O
P	I	G	E	O	N
N	O	D	D	E	T

**Crossword Solution**  
from page 59



By Louise Addison

# never too early

## Book an eye examination for your child

A child's development and learning can be hindered by undiagnosed or uncorrected sight defects, so early and regular eye examinations are essential to give them the best chance of succeeding in their education.

Rapid visual development takes place between birth and 3-4 years of age. Many visual defects such as long-sight (hyperopia), short-sight (myopia), a turning eye (strabismus) or a rugby ball-shaped eye (astigmatism) can be inherited.

Most visual problems are treated better if they are diagnosed early on. It's not necessary to wait until a child can read the letters on a conventional chart before taking them for an eye examination. Special picture charts and tests can be used and it's quite possible to take certain measurements without any interaction from the child at all.

Doctors, health visitors and some school nurses will carry out rudimentary vision checks, but only an optometrist will be able to provide a comprehensive accurate assessment.

Here are some signs to look out for but it's

important to say that some children show no signs of anything being wrong at all, yet they may still have a serious underlying vision defect.

- Frequent eye rubbing
- Dark circles under the eyes
- Obvious discomfort in bright sunshine
- watery eyes
- One eye larger than the other
- One or both eyes turning inwards or outwards, even if it's only sometimes
- A white pupil visible in family photos, particularly where flash has been used
- Holding books very close
- Aversion to reading
- Sitting right next to the TV
- Red-rimmed eyes, or sore-looking eyelids
- Excessive blinking
- Short attention span for close-up tasks
- Poor eye-hand co-ordination

It might sound obvious but choose an optometrist who likes children (not all of them do!) and who puts them at ease. When you go into the practice there should be children's books or possibly a toy or two available to keep them occupied while they wait. A child-friendly optometrist will understand if your toddler wants to run around the room periodically or alternatively doesn't want to engage at all. If your child has special needs such as autism or anxiety and needs to visit the practice to see the room and meet the staff before attending for an appointment this should be an option. Choose someone you feel comfortable with and your child will probably feel comfortable too.

Your child's sight is precious. Book and eye examination today.



## a taster of what's on in june & july ...

### CINEMA

#### **Ocean's 8** from 8th June

Debbie Ocean has just got out of prison on parole. And she's heading right back into the family business, putting together a team – 'Ocean's 8' – to rob the Met Gala. Every con has its pros, and if she's going to have a chance at pulling off this seemingly impossible heist, she's going to need the perfect crew. The risk has never been higher for her – but with a potential payoff of \$150 million, it's definitely worth it.



called Patrick. She's not keen to take him on at first, and she isn't allowed pets in her flat. As cute as Patrick is, he's quite a naughty dog, but he might just be exactly what Sarah needs in her life

**To book please visit**  
[www.cineworld.co.uk](http://www.cineworld.co.uk)

### THEATRE

**The Core Theatre, Solihull**  
(formerly Solihull Arts Complex)



many of their hits, including 'Do Wah Diddy Diddy', one of the most popular songs of the '60's, along with a mix of Jazz and Blues covers from their new album.

#### **Adrift**

##### from 29th June

Tami and Richard sail across the Pacific to California, for an adventure. But they find themselves 'Adrift' after being caught in a hurricane. Richard's ribs and leg are broken, and they're stranded. There's no chance of rescue, and their only hope is to try and reach Hawaii – but it's thousands of miles away. Based on an extraordinary true story.



#### **The Barron Knights – Farewell Tour**

##### Saturday 26th May

The Barron Knights are probably the most entertaining group to come out of the 60s and 70s. Their musicianship, their harmonies and of course their humour makes them what their peers call 'The Guvnors'. They are the only group to have toured with the Beatles and twice with the Rolling Stones. A show not to be missed - you'll be rockin' and laughing as well as rolling!



#### **The Kilkenys**

##### Friday 29th June

Renowned for their musicianship and vocal abilities, The Kilkenys have gained a reputation for revitalising traditional Irish music and adding their own touch of passion and youthful energy. Come along and join in the fun for a great evening of music and song!

#### **Patrick**

##### from 29th June

Sarah's grandmother has given her a "small beast". Unsure what to expect, she discovers that the beast in question is a small, not terribly well-behaved pug



#### **The Manfreds 2018 Tour**

##### Thursday 28th June

The '60s group Manfred Mann is now considered one of the finest and most respected bands from that era. Their records have a timeless quality and, some 55 years on, The Manfreds, with original front man, Paul Jones, will be performing



The Barron Knights

**To book please visit** [www.thecoretheatresolihull.co.uk](http://www.thecoretheatresolihull.co.uk)

# YARDLEY MEMORIALS

We pride ourselves on personal service and customer care

**We are now also based at Widney Manor Cemetery for new memorials and flowers.**

Yardley Memorials offers a personal, sympathetic and professional service when you are faced with the painful and emotional task of choosing a suitable memorial for a loved one.

All lettering free on new memorials\*.



**453 Stockfield Road, South Yardley,  
Birmingham B25 8JH.**

**Open Monday to Friday 9-5, Saturday 12-4.**

**Widney Manor Cemetery,  
Widney Manor Road Bentley Heath B93 9AA.  
Open 7 days a week 10-4.**

\* Terms and conditions apply.

**0121 706 2473**

**peter@yardleymemorials.co.uk  
www.yardleymemorials.co.uk**





# The UK Only Buy and Sell Website IS NOW LIVE!!!



Want to know why everyone's talking about it?  
Go online and check it out **NOW!**

[www.ebuygumm.co.uk](http://www.ebuygumm.co.uk)